



elevationA -



elevationB -

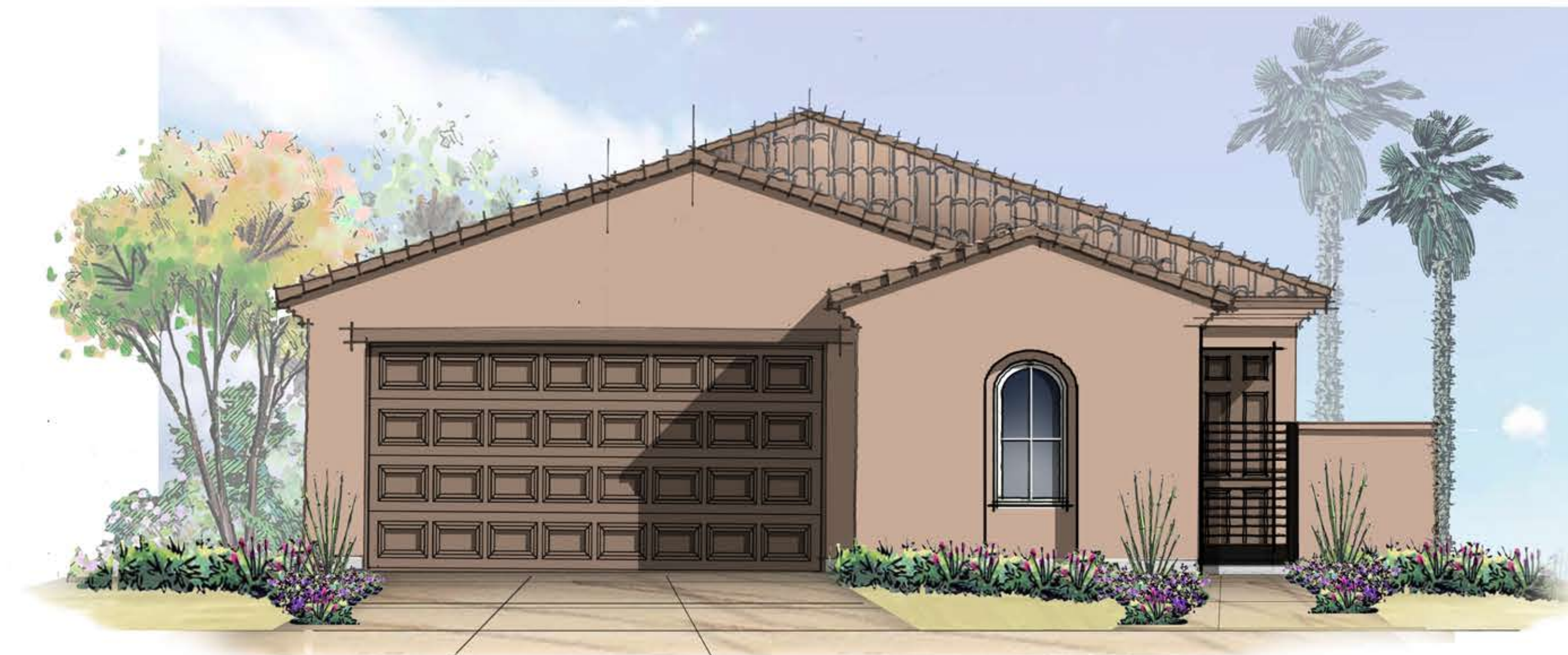


elevationC -





elevationA -



elevationB -



elevationC -





elevationA -



elevationB -



elevationC -

10.04.17

PLAN ONE

**MONTECITO AT RIO DEL SOL | RILINGTON GROUP**  
**CATHEDRAL CITY, CALIFORNIA**

NOTE: SQUARE FOOTAGE MAY VARY BASED ON CALCULATION METHODS

THESE DRAWINGS ARE INTENDED FOR DESIGN DEVELOPMENT AND PRELIMINARY STUDIES ONLY AND ARE NOT TO BE USED FOR ANY OTHER PURPOSE, SUCH AS FINAL PLOTTING OR FINAL ENGINEERING. COPYRIGHT WOODLEY ARCHITECTURAL GROUP, INC. THESE DRAWINGS MAY NOT BE USED OR DUPLICATED WITHOUT THE EXPRESS WRITTEN PERMISSION OF WOODLEY ARCHITECTURAL GROUP, INC.

**woodley  
architectural  
group, inc**  
 colorado // 731 southpark dr. suite B  
 littleton, co 80120 / 303 683.7231  
 california // 2943 pullman st. suite A  
 santa ana, ca 92705 / 949 553.8919

the **Rilington** group





elevationD -





elevationA -



elevationB -



elevationC -





elevationD -





elevationA -



elevationB -



elevationC -





elevationD -





elevationA -



elevationB -



elevationC -

10.04.17

PLAN ONE

**PALAZZO AT RIO DEL SOL | RILINGTON GROUP**  
**CATHEDRAL CITY, CALIFORNIA**

NOTE: SQUARE FOOTAGE MAY VARY BASED ON CALCULATION METHODS

THESE DRAWINGS ARE INTENDED FOR DESIGN DEVELOPMENT AND PRELIMINARY STUDIES ONLY AND ARE NOT TO BE USED FOR ANY OTHER PURPOSE, SUCH AS FINAL PLOTTING OR FINAL ENGINEERING. COPYRIGHT WOODLEY ARCHITECTURAL GROUP, INC. THESE DRAWINGS MAY NOT BE USED OR DUPLICATED WITHOUT THE EXPRESS WRITTEN PERMISSION OF WOODLEY ARCHITECTURAL GROUP, INC.

the **Rilington** group

**woodley**  
**architectural**  
**group, inc**

**colorado** // 731 southpark dr. suite B  
 littleton, co 80120 / 303 683.7231  
**california** // 2943 pullman st. suite A  
 santa ana, ca 92705 / 949 553.8919





elevationD -





elevationA -



elevationB -



elevationC -





elevationD -







elevationA -



elevationB -



elevationC -





elevationD -