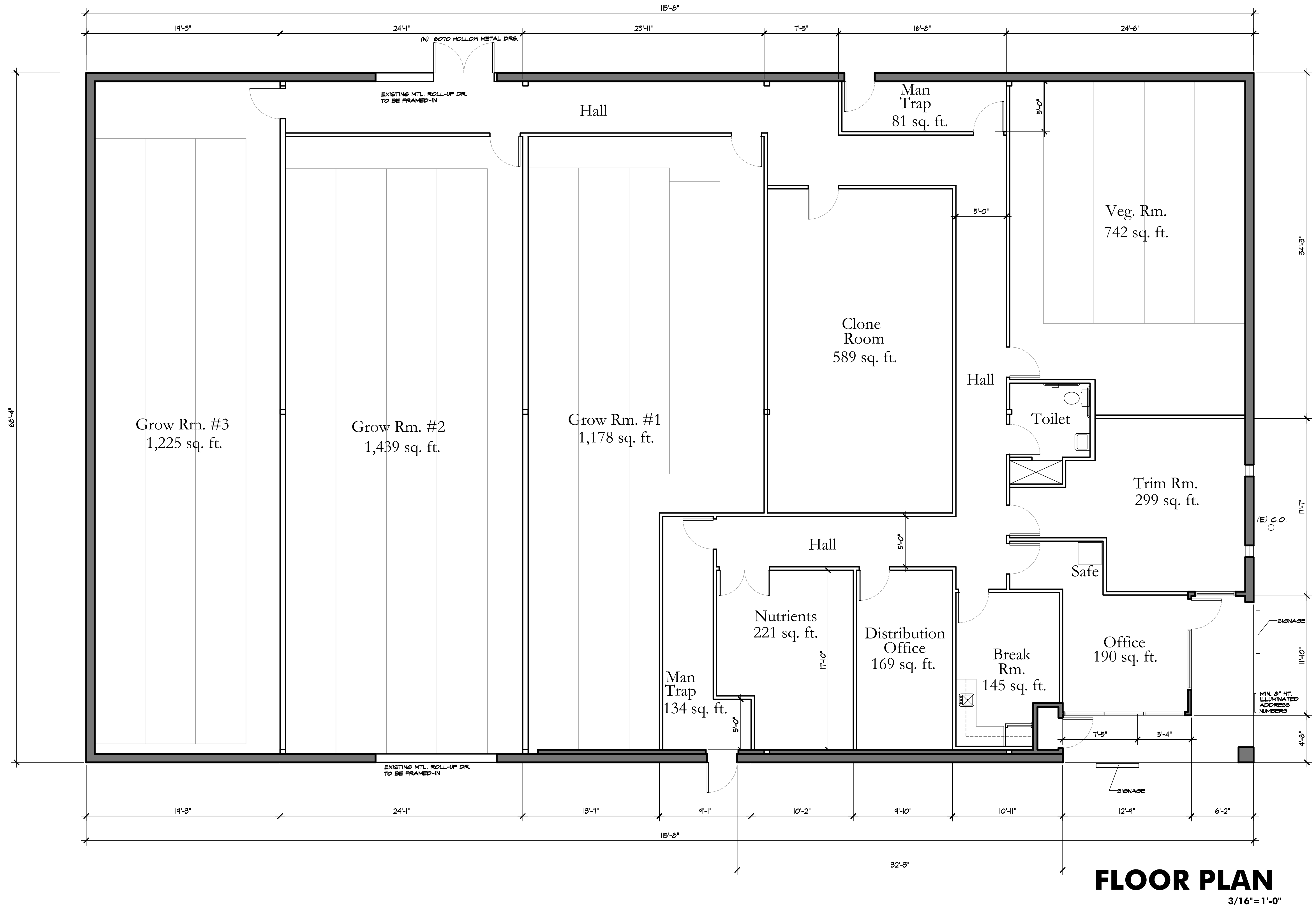


- NOTES:**
1. 3x3 TS @ 12" OC TRELLIS
 2. 4x6 TS BEAM
 3. 4x4 TS SUPPORT COLUMNS
 4. SKIM COAT STUCCO
 5. 8X8X16 CONCRETE BLOCK. #4 REBAR VERT. @ 24" OC CENTERED; #4 REBAR HORIZ. BOND BEAM @ MID-HIEIGHT AND TOP COURSE; SOLIDLY GROUTED; DECORATIVE BLOCK CAP.
 6. 6" CONCRETE SLAB W/ #3 REBAR @ 18" OC EACH WAY OVER 90% COMPACTED BASE. 2% MIN. - 4% MAX SLOPE TO DRAIN.
 7. 6" CONCRETE CURB (WHEEL STOP), TYPICAL @ INSIDE PERIMETER.
 8. SLIDE BOLT PER CITY STANDARDS.
 9. CANE BOLT PER CITY STANDARDS.
 10. 2x3 TS GATE FRAME, MITER CUT & WELD CORNERS; GRIND ALL CORNERS SMOOTH; 1-1/2" x 3/8" BAR TOP WELDED FLUSH WITH INSIDE FACE OF FRAME.
- ALTERNATIVE MATERIALS REQUEST SHALL BE SUBMITTED AND APPROVED PRIOR TO INSTALLATION, AS PER 2016 CBC 104.11**



WALL/PARTITIONS LEGEND	
	(EXISTING) 2X WALLS
	NEW 5 5/8" MTL STUDS @ 16" O.C. W/ 5/8" GYP. BD.

A CONDITIONAL USE PERMIT FOR:
NUG LABS
36-385 BANKSIDE DR. CATHEDRAL CITY, CA.

[illegible]

SHEET TITLE: . . .

FLOOR PLAN

DRAWN
G.I.A.
CHECKED
G.I.A.
DATE
AUGUST 2017
SCALE
AS NOTED
JOB NO.
CG-0815-2K17

SHEET

P2

Printed On: 01/29/18