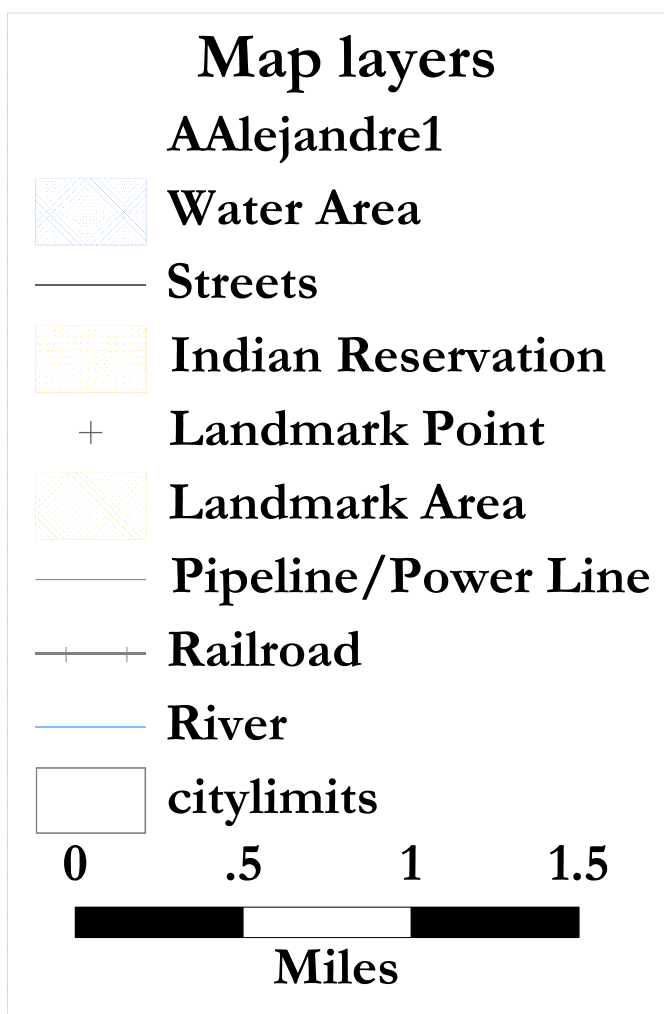


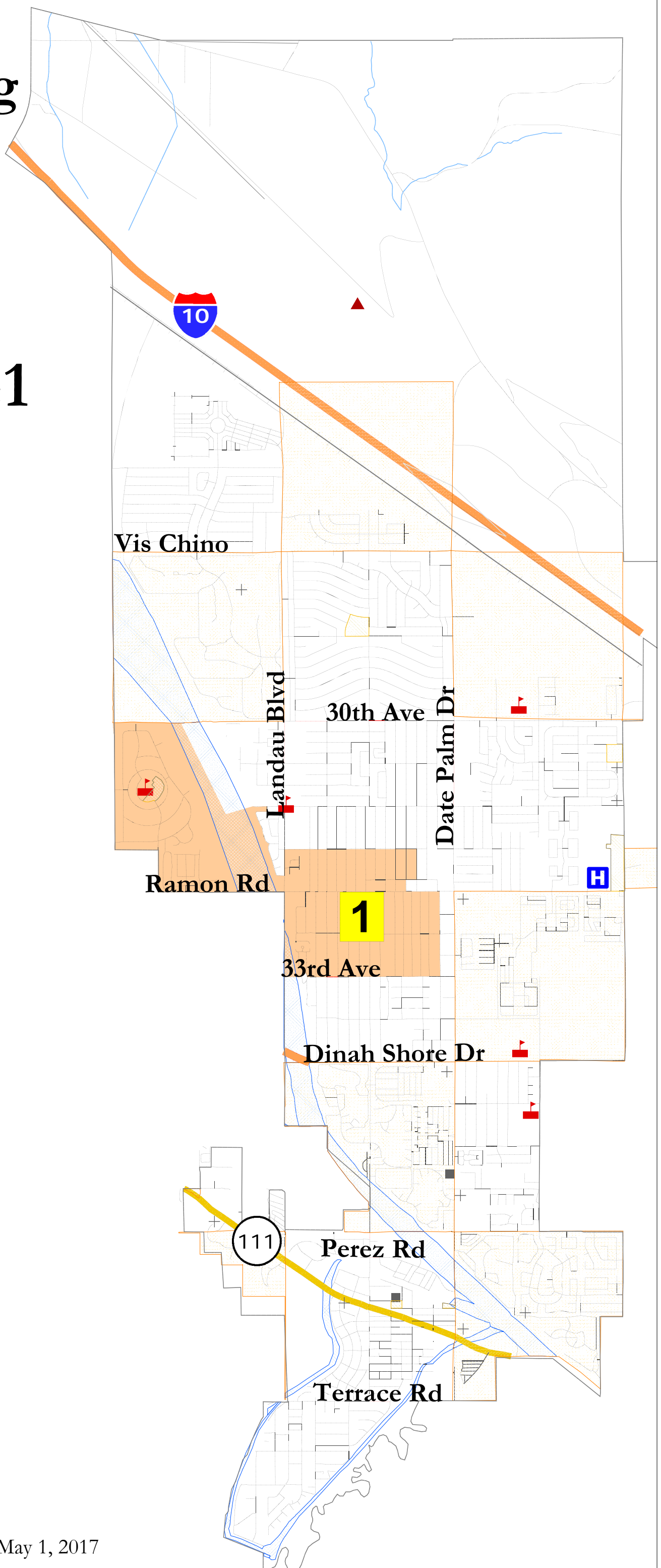
Cathedral City 2017 Districting

Map: AAlejandro1



**Elections Options:
Single-District map.
District 1 could elect in
2018 or 2020.**

National Demographics Corporation, May 1, 2017



Cathedral City - AAlejandro1							
District		1	2	3	4	5	Total
Ideal	Total Pop	10,143					50,770
10,154	Deviation from ideal	-97	Single-District map				914
	% Deviation	-0.95%					8.93%
Total Pop	% Hisp	84%					59%
	% NH White	9%					32%
	% NH Black	2%					3%
	% Asian-American	4%					5%
Voting Age Pop	Total	6,802					37,149
	% Hisp	81%					52%
	% NH White	11%					39%
	% NH Black	2%					2%
	% Asian-American	5%					6%
	Total	3,847					29,332
	% Hisp	78%					45%
	% NH White	15%					45%
Citizen Voting Age Pop	% NH Black	2%					3%
	% Asian/Pac.Isl.	5%					5%
	Total	2,462					19,098
	% Latino est.	73%					43%
Voter Registration (Nov 2014)	% Asian-Surnamed	1%					1%
	% Filipino-Surnamed	3%					2%
	% Spanish-Surnamed	65%					39%
	% NH White est.	21%					51%
	% NH Black	3%					3%
	Total	724					8,266
Voter Turnout (Nov 2014)	% Latino	65%					30%
	% Asian-Surnamed	1%					1%
	% Filipino-Surnamed	3%					1%
	% Spanish-Surnamed	59%					27%
	% NH White est.	28%					64%
	% NH Black	3%					3%
Voter Turnout (Nov 2012)	Total	1,365					12,267
	% Latino	56%					34%
	% Asian-Surnamed	1%					1%
	% Filipino-Surnamed	2%					1%
	% Spanish-Surnamed	50%					31%
	% NH White est.	35%					60%
% NH Black est.	7%					4%	
ACS Pop. Est.	Total	10,259					52,438
Age	age0-19	37%					29%
	age20-60	51%					51%
	age60plus	11%					20%
Immigration	immigrants	45%					33%
	naturalized	32%					42%
Language spoken at home	english	21%					46%
	spanish	75%					48%
	asian-lang	3%					4%
	other lang	1%					2%
Language Fluency	Speaks Eng. "Less than Very Well"	37%					23%
Education (among those age 25+)	hs-grad	49%					58%
	bachelor	5%					11%
	graduatedegree	2%					7%
Child in Household	child-under18	46%					33%
Work (percent of pop age 16+)	employed	59%					55%
	Commute on Public Transit	6%					3%
Household Income	income 0-25k	39%					28%
	income 25-50k	34%					29%
	income 50-75k	16%					17%
	income 75-200k	11%					23%
	income 200k-plus	0%					2%
Housing Stats	single family	8%					19%
	multi-family	92%					81%
	vacant	8%					19%
	occupied	92%					81%
	rented	56%					38%
	owned	44%					62%
Total and Voting Age population data from the 2010 Decennial Census.							
Surname-based Voter Registration and Turnout data from the California Statewide Database.							
Latino voter registration and turnout data are Spanish-surname counts adjusted using Census Population Department undercount estimates.							
NH White and NH Black registration and turnout counts estimated by NDC.							
Citizen Voting Age Pop., Age, Immigration, and other demographics from the 2011-2015 American Community Survey and Special Tabulation 5-year							

Cathedral City - LRodriguez1							
District		1	2	3	4	5	Total
Ideal	Total Pop	10,265					50,892
10,178	Deviation from ideal	25	Single-District map				25
	% Deviation	0.24%					0.24%
Total Pop	% Hisp	81%					58%
	% NH White	12%					32%
	% NH Black	2%					3%
	% Asian-American	5%					6%
Voting Age Pop	Total	7,057					37,404
	% Hisp	77%					51%
	% NH White	14%					39%
	% NH Black	2%					2%
	% Asian-American	5%					6%
	Total	4,535					30,020
	% Hisp	73%					45%
	% NH White	19%					45%
Citizen Voting Age Pop	% NH Black	2%					3%
	% Asian/Pac.Isl.	5%					5%
	Total	2,772					19,408
	% Latino est.	68%					43%
Voter Registration (Nov 2014)	% Asian-Surnamed	1%					1%
	% Filipino-Surnamed	3%					2%
	% Spanish-Surnamed	61%					38%
	% NH White est.	26%					52%
	% NH Black	3%					3%
	Total	879					8,421
Voter Turnout (Nov 2014)	% Latino	60%					30%
	% Asian-Surnamed	1%					1%
	% Filipino-Surnamed	3%					1%
	% Spanish-Surnamed	54%					27%
	% NH White est.	33%					64%
	% NH Black	3%					3%
Voter Turnout (Nov 2012)	Total	1,535					12,437
	% Latino	57%					35%
	% Asian-Surnamed	1%					1%
	% Filipino-Surnamed	2%					1%
	% Spanish-Surnamed	51%					31%
	% NH White est.	35%					60%
% NH Black est.	5%					3%	
ACS Pop. Est.	Total	10,373					52,553
Age	age0-19	36%					29%
	age20-60	52%					51%
	age60plus	12%					20%
Immigration	immigrants	43%					32%
	naturalized	41%					45%
Language spoken at home	english	23%					47%
	spanish	73%					47%
	asian-lang	3%					4%
	other lang	1%					2%
Language Fluency	Speaks Eng. "Less than Very Well"	34%					22%
Education (among those age 25+)	hs-grad	51%					58%
	bachelor	5%					11%
	graduatedegree	4%					7%
Child in Household	child-under18	46%					34%
Work (percent of pop age 16+)	employed	61%					55%
	Commute on Public Transit	8%					3%
Household Income	income 0-25k	36%					28%
	income 25-50k	33%					29%
	income 50-75k	17%					17%
	income 75-200k	13%					23%
	income 200k-plus	0%					2%
Housing Stats	single family	9%					18%
	multi-family	91%					82%
	vacant	9%					18%
	occupied	91%					82%
	rented	49%					37%
	owned	51%					63%
Total and Voting Age population data from the 2010 Decennial Census.							
Surname-based Voter Registration and Turnout data from the California Statewide Database.							
Latino voter registration and turnout data are Spanish-surname counts adjusted using Census Population Department undercount estimates.							
NH White and NH Black registration and turnout counts estimated by NDC.							
Citizen Voting Age Pop., Age, Immigration, and other demographics from the 2011-2015 American Community Survey and Special Tabulation 5-year							

Cathedral City 2017 Districting

Map: LRodriguez1

Map layers

LRodriguez1

Water Area

Streets

Indian Reservation

Landmark Point

Landmark Area

Pipeline/Power Line

Railroad

River

citylimits

0

.5

1

1.5

Miles

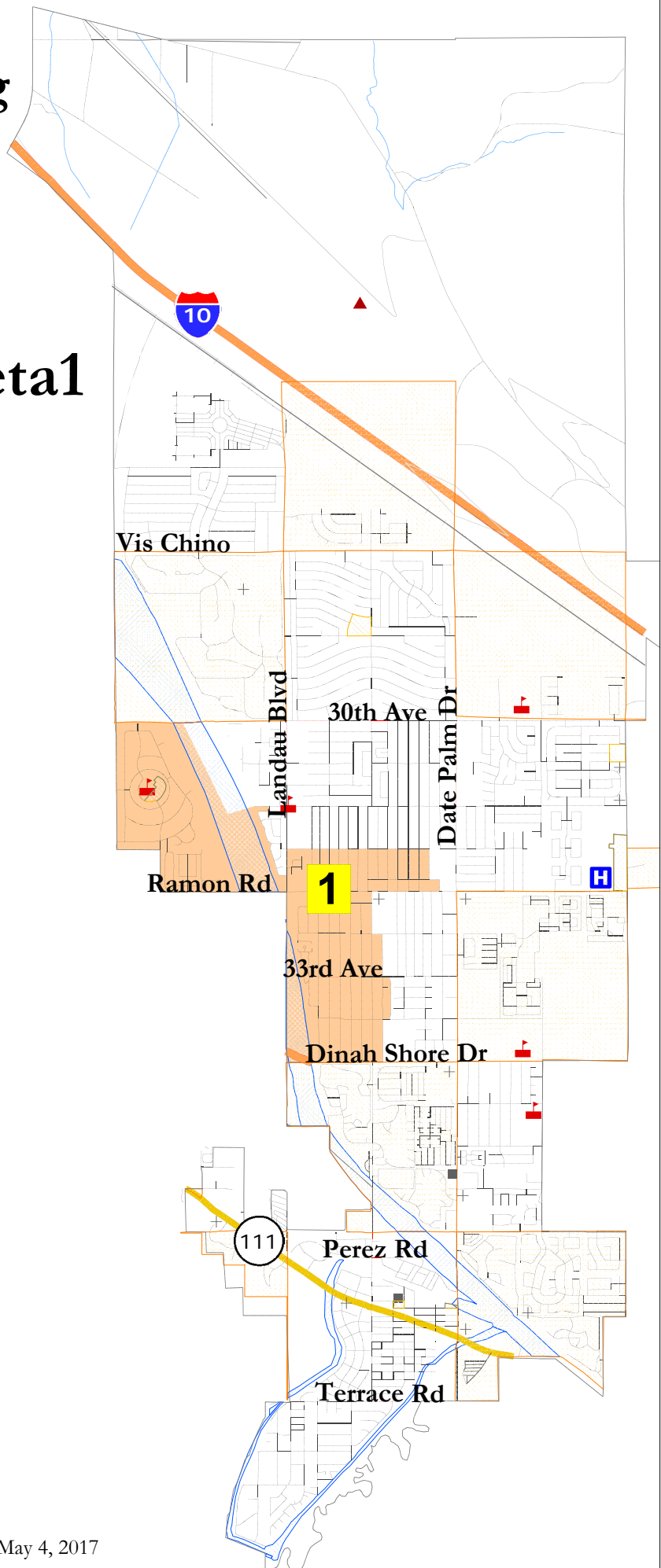
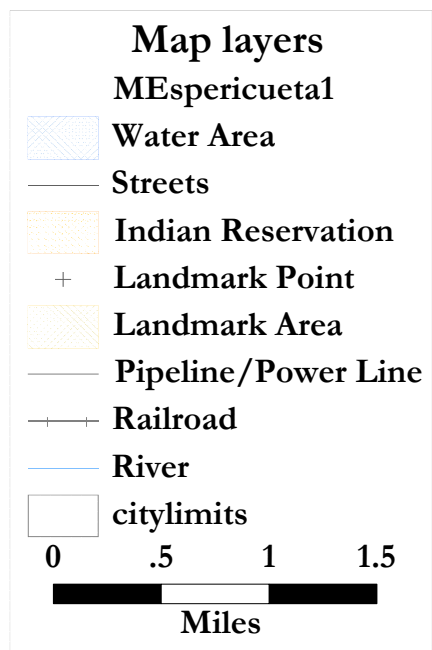
A map of Cathedral City, California, showing the 2017 districting plan. The map features a grid of streets and various geographical features. The LRodriguez1 district is highlighted in orange. Key roads include Interstate 10 (I-10) running diagonally from the top left to the middle right, and State Route 111 (SR-111) running diagonally from the bottom left to the middle right. Other labeled roads include Vis Chino, 30th Ave, Ramon Rd, 33rd Ave, Dinah Shore Dr, Perez Rd, and Terrace Rd. A yellow box with the number '1' is located in the center of the LRodriguez1 district. A blue 'H' symbol is located on the right side of the map. A scale bar at the bottom left indicates distances from 0 to 1.5 miles. A legend on the left side of the map lists various map layers and their corresponding symbols.

National Demographics Corporation, June 5, 2017

Cathedral City - Mespericueta1							
District		1	2	3	4	5	Total
Ideal	Total Pop	10,189					10,189
2,038	Deviation from ideal	-51	Single-District map				0
	% Deviation	-0.50%					0.00%
Total Pop	% Hisp	84%					84%
	% NH White	10%					10%
	% NH Black	2%					2%
	% Asian-American	4%					4%
Voting Age Pop	Total	6,926					6,926
	% Hisp	80%					80%
	% NH White	12%					12%
	% NH Black	2%					2%
	% Asian-American	5%					5%
Citizen Voting Age Pop	Total	4,398					4,398
	% Hisp	77%					77%
	% NH White	16%					16%
	% NH Black	2%					2%
	% Asian/Pac.Isl.	5%					5%
Voter Registration (Nov 2014)	Total	2,654					2,654
	% Latino est.	71%					71%
	% Asian-Surnamed	1%					1%
	% Filipino-Surnamed	3%					3%
	% Spanish-Surnamed	63%					63%
	% NH White est.	23%					23%
	% NH Black	3%					3%
Voter Turnout (Nov 2014)	Total	799					799
	% Latino	63%					63%
	% Asian-Surnamed	1%					1%
	% Filipino-Surnamed	2%					2%
	% Spanish-Surnamed	56%					56%
	% NH White est.	31%					31%
Voter Turnout (Nov 2012)	% NH Black	4%					4%
	Total	1,390					1,390
	% Latino	56%					56%
	% Asian-Surnamed	1%					1%
	% Filipino-Surnamed	2%					2%
	% Spanish-Surnamed	51%					51%
	% NH White est.	36%					36%
ACS Pop. Est.	% NH Black est.	5%					5%
	Total	10,274					10,274
Age	age0-19	36%					36%
	age20-60	52%					52%
	age60plus	11%					11%
Immigration	immigrants	44%					44%
	naturalized	39%					39%
Language spoken at home	english	21%					21%
	spanish	76%					76%
	asian-lang	3%					3%
	other lang	1%					1%
Language Fluency	Speaks Eng. "Less than Very Well"	35%					35%
Education (among those age 25+)	hs-grad	50%					50%
	bachelor	5%					5%
	graduatedegree	3%					3%
Child in Household	child-under18	47%					47%
Work (percent of pop age 16+)	employed	61%					61%
	Commute on Public Transit	8%					8%
Household Income	income 0-25k	37%					37%
	income 25-50k	34%					34%
	income 50-75k	17%					17%
	income 75-200k	13%					13%
	income 200k-plus	0%					0%
Housing Stats	single family	9%					9%
	multi-family	91%					91%
	vacant	9%					9%
	occupied	91%					91%
	rented	53%					53%
	owned	47%					47%
Total and Voting Age population data from the 2010 Decennial Census.							
Surname-based Voter Registration and Turnout data from the California Statewide Database.							
Latino voter registration and turnout data are Spanish-surname counts adjusted using Census Population Department undercount estimates.							
NH White and NH Black registration and turnout counts estimated by NDC.							
Citizen Voting Age Pop., Age, Immigration, and other demographics from the 2011-2015 American Community Survey and Special Tabulation 5-year							

Cathedral City 2017 Districting

Map: MEspericueta1



Cathedral City - AlanHooker1							
District		1	2	3	4	5	Total
Ideal	Total Pop	10,211	8,283	10,437	12,073	10,196	51,200
10,240	Deviation from ideal	-29	-1,957	197	1,833	-44	3,790
	% Deviation	-0.28%	-19.11%	1.92%	17.90%	-0.43%	37.01%
Total Pop	% Hisp	48%	51%	70%	82%	37%	59%
	% NH White	38%	39%	19%	12%	58%	32%
	% NH Black	3%	3%	2%	2%	2%	3%
	% Asian-American	9%	6%	8%	3%	2%	5%
Voting Age Pop	Total	7,379	6,008	7,382	8,000	8,575	37,344
	% Hisp	42%	44%	65%	78%	29%	51%
	% NH White	44%	46%	23%	16%	66%	39%
	% NH Black	3%	3%	2%	2%	2%	2%
	% Asian-American	9%	6%	9%	3%	2%	5%
Citizen Voting Age Pop	Total	6,996	5,392	5,326	4,553	6,998	29,265
	% Hisp	35%	46%	59%	73%	22%	44%
	% NH White	47%	47%	29%	22%	74%	46%
	% NH Black	6%	2%	2%	2%	3%	3%
	% Asian/Pac.Isl.	8%	4%	9%	3%	1%	5%
Voter Registration (Nov 2014)	Total	4,376	3,372	3,720	2,736	4,897	19,101
	% Latino est.	38%	40%	62%	65%	19%	42%
	% Asian-Surnamed	1%	1%	1%	1%	1%	1%
	% Filipino-Surnamed	2%	2%	3%	2%	1%	2%
	% Spanish-Surnamed	34%	36%	55%	58%	17%	38%
	% NH White est.	53%	55%	32%	27%	78%	52%
	% NH Black	6%	2%	2%	3%	1%	3%
Voter Turnout (Nov 2014)	Total	1,855	1,462	1,326	875	2,830	8,348
	% Latino	28%	30%	51%	51%	11%	29%
	% Asian-Surnamed	1%	1%	1%	1%	1%	1%
	% Filipino-Surnamed	2%	1%	3%	1%	1%	1%
	% Spanish-Surnamed	25%	27%	46%	46%	10%	26%
	% NH White est.	62%	65%	43%	39%	86%	65%
Voter Turnout (Nov 2012)	% NH Black est.	7%	3%	3%	3%	1%	3%
	Total	2,864	2,302	2,106	1,638	3,421	12,331
	% Latino	31%	34%	53%	45%	16%	33%
	% Asian-Surnamed	1%	1%	1%	1%	1%	1%
	% Filipino-Surnamed	2%	1%	2%	1%	1%	1%
	% Spanish-Surnamed	28%	30%	48%	40%	14%	30%
	% NH White est.	61%	61%	41%	45%	81%	61%
ACS Pop. Est.	% NH Black est.	6%	3%	3%	7%	1%	3%
	Total	11,007	9,133	10,316	12,500	10,182	53,138
Age	age0-19	28%	27%	33%	37%	18%	29%
	age20-60	54%	56%	52%	52%	43%	51%
	age60plus	18%	16%	16%	10%	39%	20%
Immigration	immigrants	26%	31%	38%	46%	21%	33%
	naturalized	53%	52%	44%	30%	33%	41%
Language spoken at home	english	60%	49%	37%	16%	68%	45%
	spanish	32%	44%	56%	81%	27%	49%
	asian-lang	6%	3%	5%	2%	1%	3%
	other lang	2%	3%	2%	1%	4%	2%
Language Fluency	Speaks Eng. "Less than Very Well"	14%	18%	27%	38%	15%	23%
Education (among those age 25+)	hs-grad	60%	66%	56%	48%	58%	58%
	bachelor	15%	11%	9%	7%	13%	11%
	graduateddegree	9%	5%	4%	4%	12%	7%
Child in Household	child-under18	37%	37%	40%	48%	13%	34%
Work (percent of pop age 16+)	employed	57%	57%	58%	58%	43%	54%
	Commute on Public Transit	2%	1%	2%	7%	1%	3%
Household Income	income 0-25k	20%	20%	31%	39%	32%	29%
	income 25-50k	29%	25%	29%	32%	29%	29%
	income 50-75k	17%	19%	18%	15%	14%	17%
	income 75-200k	32%	33%	20%	13%	20%	23%
	income 200k-plus	2%	4%	1%	1%	4%	3%
Housing Stats	single family	10%	20%	9%	13%	33%	19%
	multi-family	90%	80%	91%	87%	67%	81%
	vacant	10%	20%	9%	13%	33%	19%
	occupied	90%	80%	91%	87%	67%	81%
	rented	33%	30%	32%	67%	36%	40%
	owned	67%	70%	68%	33%	64%	60%
Total and Voting Age population data from the 2010 Decennial Census.							
Surname-based Voter Registration and Turnout data from the California Statewide Database.							
Latino voter registration and turnout data are Spanish-surname counts adjusted using Census Population Department undercount estimates.							
NH White and NH Black registration and turnout counts estimated by NDC.							
Citizen Voting Age Pop., Age, Immigration, and other demographics from the 2011-2015 American Community Survey and Special Tabulation 5-year							

Cathedral City 2017 Districting

Map:
AlanHooker1

Map layers

AlanHooker

Water Area

Streets

Indian Reservation

Landmark Point

Landmark Area

Pipeline/Power Line

Railroad

River

citylimits

0

.5

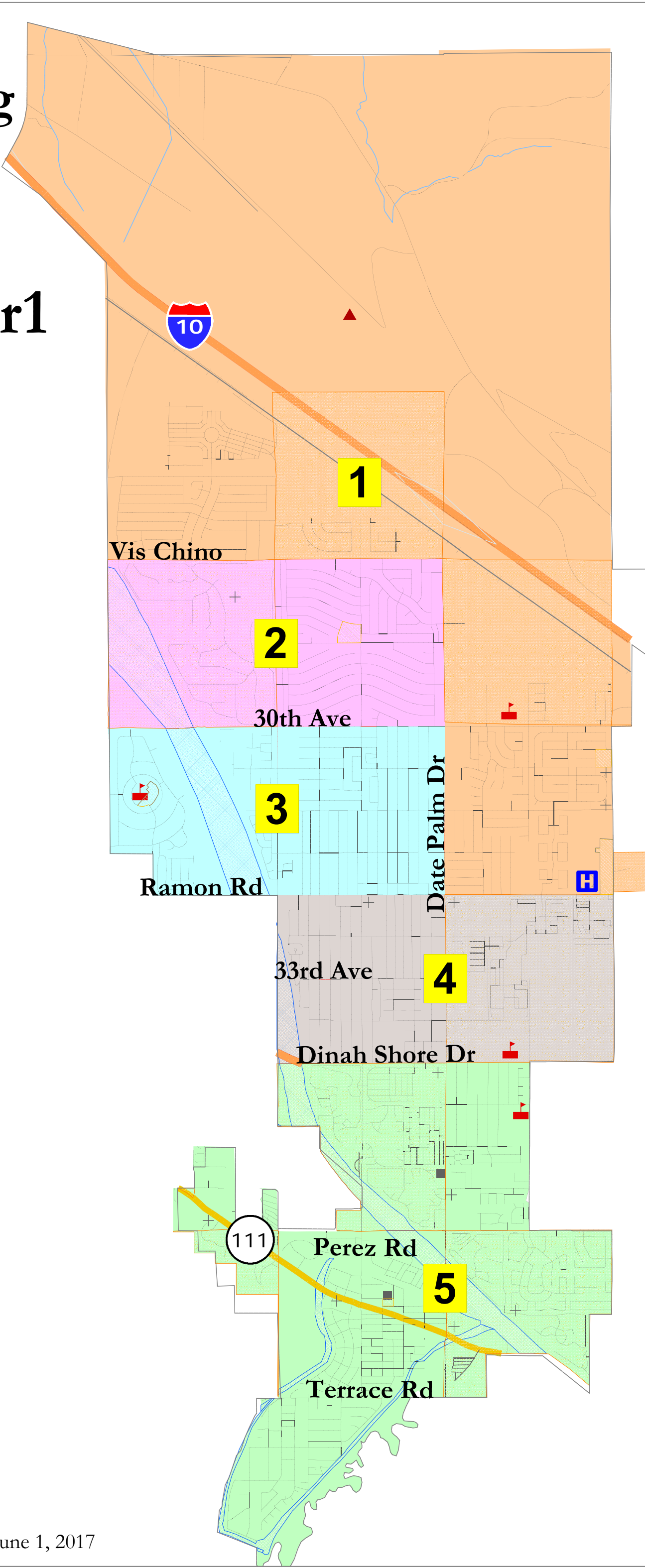
1

1.5

Miles

Elections Option A:
2018: Districts 1, 3 and 5
2020: Districts 2 and 4

Elections Option B:
2018: Districts 2, 3 and 4
2020: Districts 1 and 5



Draw the Future for Cathedral City

Can you divide the city into five areas of roughly 10,240 people each? Or can you draw one district of 10,240 people in and around your own neighborhood?

The numbers in the dashed boxes indicate the number of people in that "Population Unit."

Want more detail? An online tool to draw districts block-by-block will be available on the City website.

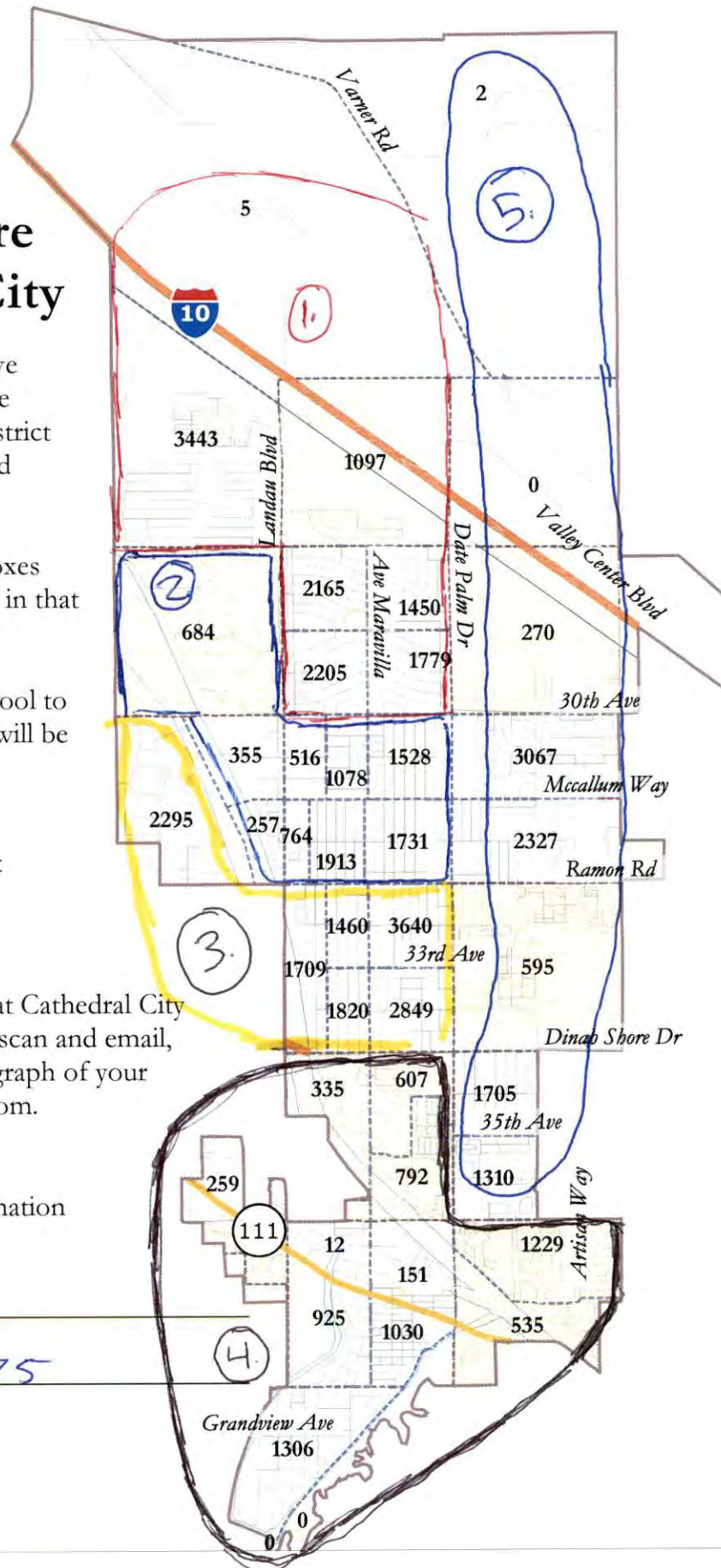
For more info., please visit
www.cathedralcity.gov

Submit your map at any time at Cathedral City Hall, or send it in by mail, via scan and email, take and email a digital photograph of your map to info@NDCresearch.com.

Your Name & Contact Information
(Optional but recommended):

Arvin Ocampo

760-902-5475



Cathedral City - AOCamp01							
District		1	2	3	4	5	Total
Ideal	Total Pop	12,144	8,826	13,773	7,181	9,276	51,200
10,240	Deviation from ideal	1,904	-1,414	3,533	-3,059	-964	6,592
	% Deviation	18.59%	-13.81%	34.50%	-29.87%	-9.41%	64.38%
Total Pop	% Hisp	50%	62%	85%	27%	52%	59%
	% NH White	38%	26%	9%	69%	38%	32%
	% NH Black	4%	2%	2%	2%	2%	3%
	% Asian-American	6%	8%	3%	2%	7%	5%
Voting Age Pop	Total	8,720	6,405	9,040	6,404	6,775	37,344
	% Hisp	44%	56%	83%	21%	44%	51%
	% NH White	44%	32%	11%	74%	46%	39%
	% NH Black	4%	2%	2%	2%	2%	2%
	% Asian-American	7%	9%	3%	2%	7%	5%
Citizen Voting Age Pop	Total	8,260	4,930	5,058	5,373	5,645	29,265
	% Hisp	44%	48%	81%	18%	32%	44%
	% NH White	43%	39%	14%	79%	57%	46%
	% NH Black	4%	2%	3%	2%	5%	3%
	% Asian/Pac.Isl.	7%	10%	3%	1%	5%	5%
Voter Registration (Nov 2014)	Total	5,044	3,229	3,117	3,725	3,986	19,101
	% Latino est.	39%	53%	75%	14%	36%	42%
	% Asian-Surnamed	2%	1%	1%	1%	1%	1%
	% Filipino-Surnamed	2%	3%	2%	1%	2%	2%
	% Spanish-Surnamed	35%	48%	67%	12%	32%	38%
	% NH White est.	53%	41%	19%	83%	57%	52%
	% NH Black	5%	2%	3%	1%	2%	3%
Voter Turnout (Nov 2014)	Total	2,120	1,278	863	2,293	1,794	8,348
	% Latino	30%	41%	68%	9%	25%	29%
	% Asian-Surnamed	2%	1%	1%	1%	1%	1%
	% Filipino-Surnamed	1%	2%	2%	1%	2%	1%
	% Spanish-Surnamed	27%	37%	61%	8%	22%	26%
	% NH White est.	62%	53%	25%	88%	68%	65%
Voter Turnout (Nov 2012)	% NH Black est.	6%	3%	4%	1%	3%	3%
	Total	3,422	1,977	1,660	2,644	2,628	12,331
	% Latino	32%	46%	52%	15%	31%	33%
	% Asian-Surnamed	1%	1%	1%	1%	1%	1%
	% Filipino-Surnamed	1%	2%	1%	1%	2%	1%
	% Spanish-Surnamed	28%	42%	46%	14%	28%	30%
	% NH White est.	61%	49%	39%	82%	64%	61%
ACS Pop. Est.	% NH Black est.	5%	2%	7%	1%	2%	3%
	Total	13,643	8,884	13,964	6,828	9,818	53,138
Age	age0-19	28%	30%	38%	12%	28%	29%
	age20-60	56%	52%	52%	40%	52%	51%
	age60plus	16%	18%	9%	48%	21%	20%
Immigration	immigrants	29%	36%	47%	19%	27%	33%
	naturalized	55%	48%	30%	37%	40%	41%
Language spoken at home	english	54%	41%	16%	74%	57%	45%
	spanish	38%	50%	82%	23%	36%	49%
	asian-lang	4%	6%	2%	1%	5%	3%
	other lang	3%	3%	0%	3%	3%	2%
Language Fluency	Speaks Eng. "Less than Very Well"	16%	23%	39%	14%	17%	23%
Education (among those age 25+)	hs-grad	67%	58%	48%	59%	54%	58%
	bachelor	11%	12%	5%	14%	15%	11%
	graduatedegree	5%	6%	2%	12%	13%	7%
Child in Household	child-under18	40%	35%	49%	9%	33%	34%
Work (percent of pop age 16+)	employed	57%	56%	60%	39%	56%	54%
	Commute on Public Transit	1%	1%	7%	1%	3%	3%
Household Income	income 0-25k	21%	27%	40%	34%	20%	29%
	income 25-50k	24%	27%	34%	29%	31%	29%
	income 50-75k	19%	18%	15%	15%	16%	17%
	income 75-200k	33%	26%	10%	20%	28%	23%
	income 200k-plus	3%	2%	0%	3%	6%	3%
Housing Stats	single family	7%	23%	8%	34%	19%	19%
	multi-family	93%	77%	92%	66%	81%	81%
	vacant	7%	23%	8%	34%	19%	19%
	occupied	93%	77%	92%	66%	81%	81%
	rented	34%	29%	66%	32%	35%	40%
	owned	66%	71%	34%	68%	65%	60%
Total and Voting Age population data from the 2010 Decennial Census.							
Surname-based Voter Registration and Turnout data from the California Statewide Database.							
Latino voter registration and turnout data are Spanish-surname counts adjusted using Census Population Department undercount estimates.							
NH White and NH Black registration and turnout counts estimated by NDC.							
Citizen Voting Age Pop., Age, Immigration, and other demographics from the 2011-2015 American Community Survey and Special Tabulation 5-year							

Cathedral City 2017 Districting

Map: CJohnson1

Map layers

CJohnson1

Water Area

Streets

Indian Reservation

+

Landmark Point

Landmark Area

Pipeline/Power Line

Railroad

River

citylimits

0

.5

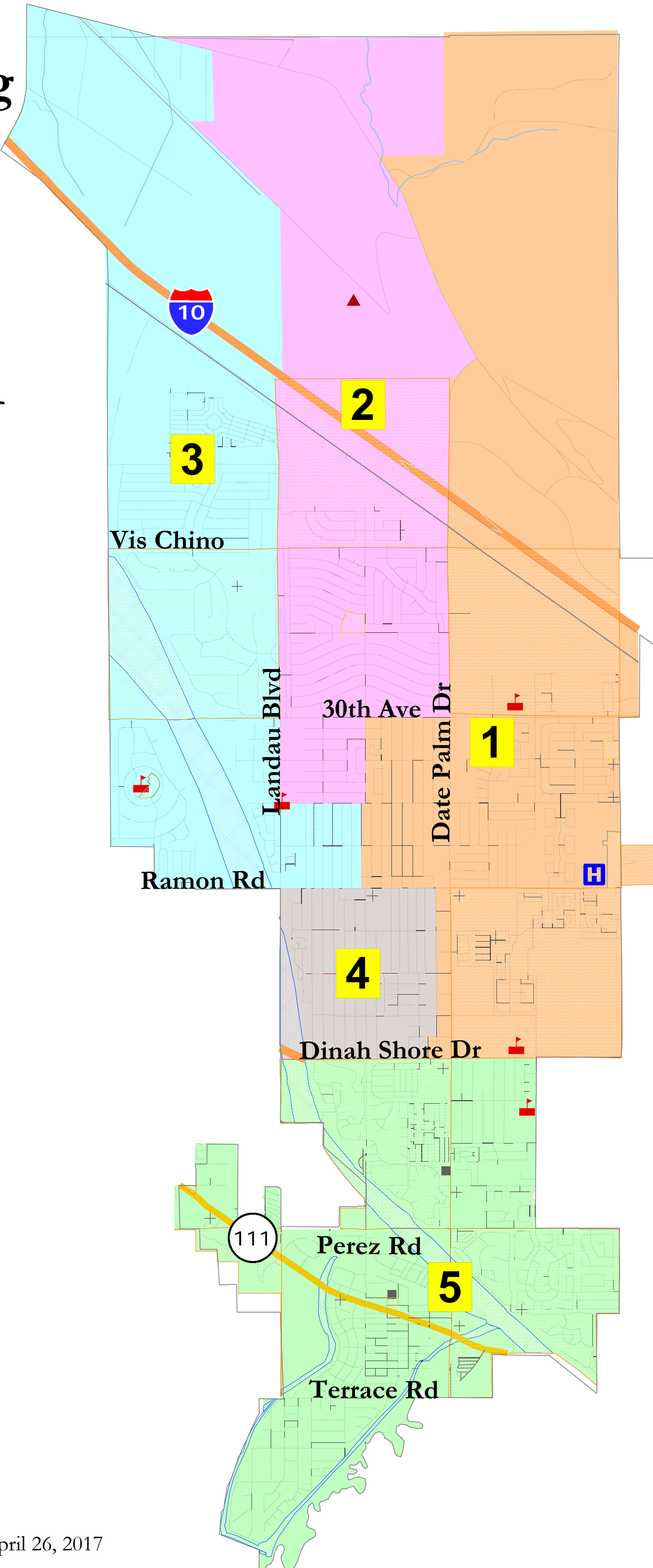
1

1.5

Miles

Elections Option A:
2018: Districts 1, 3 and 5
2020: Districts 2 and 4

Elections Option B:
2018: Districts 2, 3 and 4
2020: Districts 1 and 5



Cathedral City - CJohnson1							
District		1	2	3	4	5	Total
<u>Ideal</u>	Total Pop	10,010	10,292	9,716	10,986	10,196	51,200
10,240	Deviation from ideal	-230	52	-524	746	-44	1,270
	% Deviation	-2.25%	0.51%	-5.12%	7.29%	-0.43%	12.40%
Total Pop	% Hisp	56%	54%	58%	87%	37%	59%
	% NH White	32%	34%	31%	8%	58%	32%
	% NH Black	2%	4%	3%	2%	2%	3%
	% Asian-American	9%	7%	6%	2%	2%	5%
Voting Age Pop	Total	7,173	7,298	7,229	7,069	8,575	37,344
	% Hisp	48%	48%	52%	84%	29%	51%
	% NH White	39%	40%	36%	10%	66%	39%
	% NH Black	2%	4%	3%	2%	2%	2%
	% Asian-American	10%	7%	7%	3%	2%	5%
Citizen Voting Age Pop	Total	5,949	6,665	5,719	3,934	6,998	29,265
	% Hisp	38%	49%	47%	80%	22%	44%
	% NH White	48%	41%	39%	15%	74%	46%
	% NH Black	4%	3%	4%	2%	3%	3%
	% Asian/Pac.Isl.	9%	6%	8%	3%	1%	5%
Voter Registration (Nov 2014)	Total	4,096	4,098	3,791	2,219	4,897	19,101
	% Latino est.	45%	42%	49%	75%	19%	42%
	% Asian-Surnamed	1%	2%	1%	1%	1%	1%
	% Filipino-Surnamed	3%	2%	2%	2%	1%	2%
	% Spanish-Surnamed	40%	38%	44%	68%	17%	38%
	% NH White est.	47%	52%	44%	19%	78%	52%
	% NH Black	3%	3%	4%	3%	1%	3%
Voter Turnout (Nov 2014)	Total	1,698	1,728	1,509	584	2,830	8,348
	% Latino	33%	32%	38%	70%	11%	29%
	% Asian-Surnamed	1%	2%	1%	1%	1%	1%
	% Filipino-Surnamed	2%	1%	2%	1%	1%	1%
	% Spanish-Surnamed	30%	29%	34%	62%	10%	26%
	% NH White est.	58%	62%	54%	24%	86%	65%
Voter Turnout (Nov 2012)	% NH Black est.	3%	4%	5%	4%	1%	3%
	Total	2,624	2,725	2,328	1,234	3,421	12,331
	% Latino	40%	35%	41%	45%	16%	33%
	% Asian-Surnamed	1%	1%	1%	1%	1%	1%
	% Filipino-Surnamed	2%	1%	2%	1%	1%	1%
	% Spanish-Surnamed	36%	32%	37%	41%	14%	30%
ACS Pop. Est.	% NH White est.	54%	59%	51%	45%	81%	61%
	% NH Black est.	2%	4%	5%	8%	1%	3%
	Total	10,254	11,238	10,093	11,370	10,182	53,138
Age	age0-19	29%	29%	30%	39%	18%	29%
	age20-60	53%	57%	51%	53%	43%	51%
	age60plus	18%	15%	19%	8%	39%	20%
Immigration	immigrants	31%	31%	33%	47%	21%	33%
	naturalized	46%	53%	46%	30%	33%	41%
Language spoken at home	english	49%	49%	49%	13%	68%	45%
	spanish	43%	45%	43%	85%	27%	49%
	asian-lang	6%	3%	5%	2%	1%	3%
	other lang	2%	3%	2%	1%	4%	2%
Language Fluency	Speaks Eng. "Less than Very Well"	20%	19%	21%	39%	15%	23%
Education (among those age 25+)	hs-grad	54%	67%	59%	48%	58%	58%
	bachelor	15%	11%	10%	5%	13%	11%
	graduateddegree	10%	4%	6%	2%	12%	7%
Child in Household	child-under18	37%	42%	34%	51%	13%	34%
Work (percent of pop age 16+)	employed	56%	58%	56%	60%	43%	54%
	Commute on Public Transit	2%	1%	2%	7%	1%	3%
Household Income	income 0-25k	22%	21%	28%	40%	32%	29%
	income 25-50k	29%	23%	29%	33%	29%	29%
	income 50-75k	17%	20%	17%	15%	14%	17%
	income 75-200k	29%	33%	23%	11%	20%	23%
	income 200k-plus	3%	3%	2%	0%	4%	3%
Housing Stats	single family	13%	6%	22%	8%	33%	19%
	multi-family	87%	94%	78%	92%	67%	81%
	vacant	13%	6%	22%	8%	33%	19%
	occupied	87%	94%	78%	92%	67%	81%
	rented	31%	32%	33%	71%	36%	40%
	owned	69%	68%	67%	29%	64%	60%
Total and Voting Age population data from the 2010 Decennial Census.							
Surname-based Voter Registration and Turnout data from the California Statewide Database.							
Latino voter registration and turnout data are Spanish-surname counts adjusted using Census Population Department undercount estimates.							
NH White and NH Black registration and turnout counts estimated by NDC.							
Citizen Voting Age Pop., Age, Immigration, and other demographics from the 2011-2015 American Community Survey and Special Tabulation 5-year							

Cathedral City 2017 Districting

Map: CLoe1

Map layers

CLoe1

Water Area

Streets

Indian Reservation

Landmark Point

Landmark Area

Pipeline/Power Line

Railroad

River

citylimits

0

.5

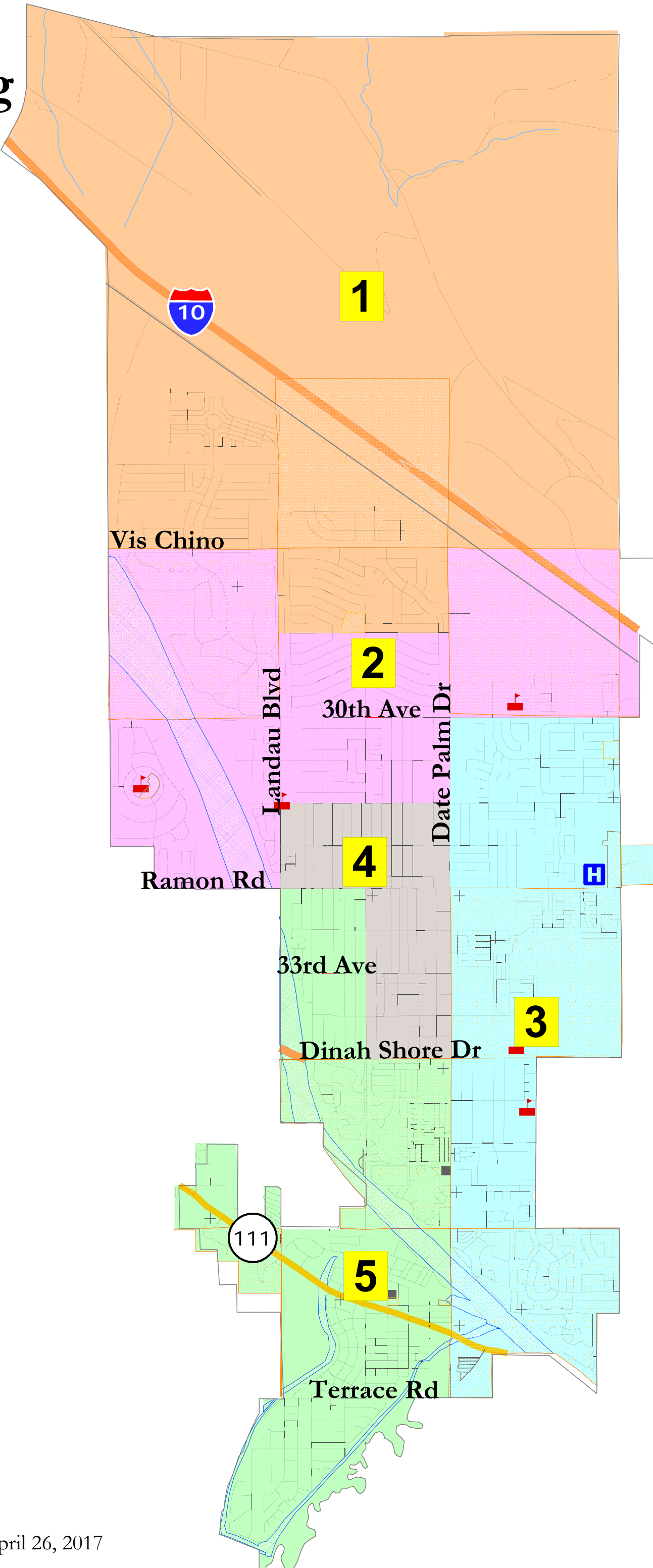
1

1.5

Miles

Elections Option A:
2018: Districts 1, 3 and 5
2020: Districts 2 and 4

Elections Option B:
2018: Districts 2, 3 and 4
2020: Districts 1 and 5



Cathedral City - CLoe1							
District		1	2	3	4	5	Total
Ideal	Total Pop	8,162	10,967	10,768	10,897	10,406	51,200
10,240	Deviation from ideal	-2,078	727	528	657	166	2,805
	% Deviation	-20.29%	7.10%	5.16%	6.42%	1.62%	27.39%
Total Pop	% Hisp	47%	60%	46%	80%	58%	59%
	% NH White	40%	30%	45%	11%	37%	32%
	% NH Black	4%	3%	2%	2%	2%	3%
	% Asian-American	7%	6%	6%	6%	2%	5%
Voting Age Pop	Total	5,924	7,878	8,239	7,326	7,977	37,344
	% Hisp	41%	54%	37%	76%	50%	51%
	% NH White	46%	36%	54%	14%	46%	39%
	% NH Black	4%	3%	2%	2%	2%	2%
	% Asian-American	7%	6%	6%	7%	2%	5%
Citizen Voting Age Pop	Total	5,845	6,299	6,974	4,218	5,930	29,265
	% Hisp	39%	54%	26%	67%	43%	44%
	% NH White	46%	39%	64%	19%	54%	46%
	% NH Black	6%	2%	4%	2%	2%	3%
	% Asian/Pac.Isl.	8%	4%	4%	12%	1%	5%
Voter Registration (Nov 2014)	Total	3,462	4,254	4,920	2,806	3,659	19,101
	% Latino est.	37%	50%	30%	70%	32%	42%
	% Asian-Surnamed	2%	1%	1%	1%	1%	1%
	% Filipino-Surnamed	2%	2%	1%	3%	1%	2%
	% Spanish-Surnamed	34%	45%	27%	62%	29%	38%
	% NH White est.	53%	46%	64%	23%	64%	52%
	% NH Black	6%	2%	2%	3%	1%	3%
Voter Turnout (Nov 2014)	Total	1,486	1,706	2,451	857	1,849	8,348
	% Latino	27%	38%	19%	63%	18%	29%
	% Asian-Surnamed	2%	1%	1%	2%	1%	1%
	% Filipino-Surnamed	1%	1%	1%	3%	1%	1%
	% Spanish-Surnamed	24%	34%	17%	57%	16%	26%
	% NH White est.	63%	58%	75%	29%	79%	65%
Voter Turnout (Nov 2012)	% NH Black est.	7%	2%	2%	4%	1%	3%
	Total	2,355	2,618	3,417	1,641	2,300	12,331
	% Latino	29%	43%	24%	51%	26%	33%
	% Asian-Surnamed	1%	1%	1%	1%	0%	1%
	% Filipino-Surnamed	1%	1%	1%	2%	1%	1%
	% Spanish-Surnamed	26%	39%	22%	45%	23%	30%
	% NH White est.	62%	53%	71%	40%	70%	61%
ACS Pop. Est.	% NH Black est.	7%	2%	2%	6%	2%	3%
	Total	9,079	11,139	11,274	11,428	10,218	53,138
Age	age0-19	27%	29%	25%	38%	26%	29%
	age20-60	56%	53%	49%	51%	48%	51%
	age60plus	17%	18%	26%	11%	26%	20%
Immigration	immigrants	25%	34%	25%	47%	32%	33%
	naturalized	61%	45%	42%	30%	38%	41%
Language spoken at home	english	63%	43%	61%	21%	41%	45%
	spanish	30%	52%	32%	73%	56%	49%
	asian-lang	4%	2%	4%	6%	1%	3%
	other lang	3%	3%	3%	1%	2%	2%
Language Fluency	Speaks Eng. "Less than Very Well"	13%	23%	15%	35%	27%	23%
Education (among those age 25+)	hs-grad	67%	61%	55%	50%	56%	58%
	bachelor	12%	11%	15%	7%	10%	11%
	graduatedegree	5%	5%	13%	2%	8%	7%
Child in Household	child-under18	37%	36%	26%	47%	25%	34%
Work (percent of pop age 16+)	employed	55%	58%	52%	56%	51%	54%
	Commute on Public Transit	0%	2%	2%	3%	7%	3%
Household Income	income 0-25k	21%	25%	21%	40%	36%	29%
	income 25-50k	26%	25%	30%	33%	30%	29%
	income 50-75k	16%	21%	15%	15%	16%	17%
	income 75-200k	34%	27%	28%	12%	16%	23%
	income 200k-plus	3%	2%	5%	0%	2%	3%
Housing Stats	single family	8%	20%	22%	8%	28%	19%
	multi-family	92%	80%	78%	92%	72%	81%
	vacant	8%	20%	22%	8%	28%	19%
	occupied	92%	80%	78%	92%	72%	81%
	rented	35%	28%	31%	60%	46%	40%
	owned	65%	72%	69%	40%	54%	60%
Total and Voting Age population data from the 2010 Decennial Census.							
Surname-based Voter Registration and Turnout data from the California Statewide Database.							
Latino voter registration and turnout data are Spanish-surname counts adjusted using Census Population Department undercount estimates.							
NH White and NH Black registration and turnout counts estimated by NDC.							
Citizen Voting Age Pop., Age, Immigration, and other demographics from the 2011-2015 American Community Survey and Special Tabulation 5-year							

Cathedral City 2017 Districting

Map: Culberston- Winbigler1

Map layers

CulbertsonWinbigler

Water Area

Streets

Indian Reservation

+

Landmark Point

Landmark Area

Pipeline/Power Line

+

Railroad

River

citylimits

0

.5

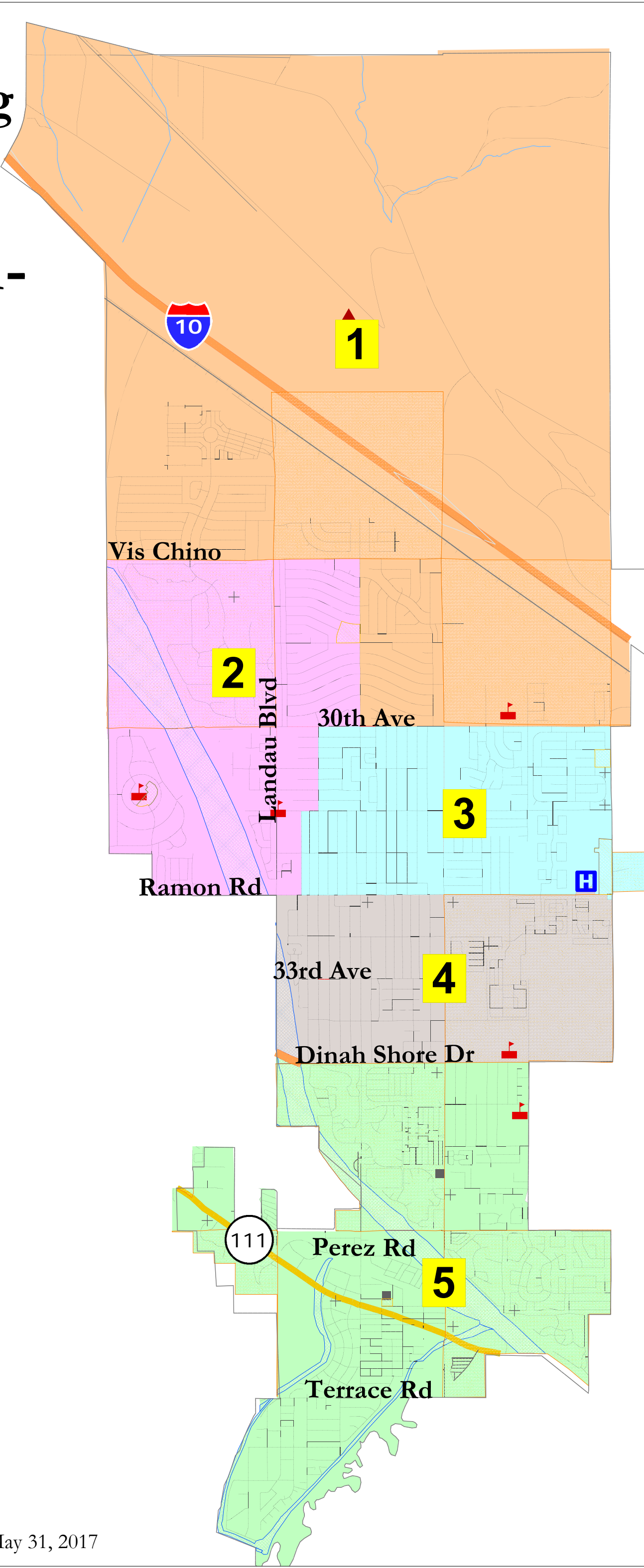
1

1.5

Miles

Elections Option A:
2018: Districts 1, 3 and 5
2020: Districts 2 and 4

Elections Option B:
2018: Districts 2, 3 and 4
2020: Districts 1 and 5



Cathedral City - CulberstonWinbigler1							
District		1	2	3	4	5	Total
Ideal	Total Pop	8,046	9,241	11,644	12,073	10,196	51,200
10,240	Deviation from ideal	-2,194	-999	1,404	1,833	-444	4,027
	% Deviation	-21.43%	-9.76%	13.71%	17.90%	-0.43%	39.33%
Total Pop	% Hisp	44%	59%	63%	82%	37%	59%
	% NH White	43%	30%	25%	12%	58%	32%
	% NH Black	4%	3%	2%	2%	2%	3%
	% Asian-American	7%	6%	9%	3%	2%	5%
Voting Age Pop	Total	5,933	6,727	8,109	8,000	8,575	37,344
	% Hisp	39%	53%	57%	78%	29%	51%
	% NH White	49%	37%	29%	16%	66%	39%
	% NH Black	4%	3%	2%	2%	2%	2%
	% Asian-American	7%	6%	10%	3%	2%	5%
Citizen Voting Age Pop	Total	5,943	5,165	6,606	4,553	6,998	29,265
	% Hisp	40%	52%	46%	73%	22%	44%
	% NH White	46%	42%	39%	22%	74%	46%
	% NH Black	5%	3%	3%	2%	3%	3%
	% Asian/Pac.Isl.	8%	4%	10%	3%	1%	5%
Voter Registration (Nov 2014)	Total	3,669	3,407	4,470	2,658	4,897	19,101
	% Latino est.	37%	51%	50%	67%	19%	42%
	% Asian-Surnamed	2%	1%	1%	1%	1%	1%
	% Filipino-Surnamed	2%	2%	3%	2%	1%	2%
	% Spanish-Surnamed	33%	45%	45%	60%	17%	38%
	% NH White est.	55%	44%	42%	28%	78%	52%
	% NH Black	5%	3%	3%	3%	1%	3%
Voter Turnout (Nov 2014)	Total	1,613	1,320	1,760	826	2,830	8,348
	% Latino	28%	39%	39%	54%	11%	29%
	% Asian-Surnamed	2%	1%	1%	1%	1%	1%
	% Filipino-Surnamed	1%	1%	2%	1%	1%	1%
	% Spanish-Surnamed	25%	35%	35%	48%	10%	26%
	% NH White est.	63%	55%	52%	41%	86%	65%
Voter Turnout (Nov 2012)	% NH Black est.	6%	3%	3%	3%	1%	3%
	Total	2,462	2,117	2,745	1,585	3,421	12,331
	% Latino	31%	43%	42%	45%	16%	33%
	% Asian-Surnamed	1%	1%	1%	1%	1%	1%
	% Filipino-Surnamed	1%	1%	2%	1%	1%	1%
	% Spanish-Surnamed	27%	39%	37%	40%	14%	30%
ACS Pop. Est.	% NH White est.	61%	51%	52%	47%	81%	61%
	% NH Black est.	6%	3%	2%	7%	1%	3%
	Total	9,053	9,511	11,892	12,500	10,182	53,138
	age0-19	27%	30%	31%	37%	18%	29%
	age20-60	55%	53%	54%	52%	43%	51%
	age60plus	18%	17%	15%	10%	39%	20%
Immigration	immigrants	26%	34%	33%	46%	21%	33%
	naturalized	57%	46%	48%	30%	33%	41%
Language spoken at home	english	59%	45%	45%	16%	68%	45%
	spanish	33%	50%	47%	81%	27%	49%
	asian-lang	5%	3%	6%	2%	1%	3%
	other lang	3%	3%	2%	1%	4%	2%
Language Fluency	Speaks Eng. "Less than Very Well"	13%	24%	22%	38%	15%	23%
Education (among those age 25+)	hs-grad	67%	60%	56%	48%	58%	58%
	bachelor	12%	9%	13%	7%	13%	11%
	graduateddegree	6%	5%	8%	4%	12%	7%
Child in Household	child-under18	38%	36%	41%	48%	13%	34%
Work (percent of pop age 16+)	employed	56%	57%	58%	58%	43%	54%
	Commute on Public Transit	0%	2%	2%	7%	1%	3%
Household Income	income 0-25k	22%	26%	23%	39%	32%	29%
	income 25-50k	24%	28%	30%	32%	29%	29%
	income 50-75k	18%	18%	18%	15%	14%	17%
	income 75-200k	34%	25%	27%	13%	20%	23%
	income 200k-plus	3%	3%	2%	1%	4%	3%
Housing Stats	single family	10%	20%	8%	13%	33%	19%
	multi-family	90%	80%	92%	87%	67%	81%
	vacant	10%	20%	8%	13%	33%	19%
	occupied	90%	80%	92%	87%	67%	81%
	rented	34%	31%	31%	67%	36%	40%
	owned	66%	69%	69%	33%	64%	60%
Total and Voting Age population data from the 2010 Decennial Census.							
Surname-based Voter Registration and Turnout data from the California Statewide Database.							
Latino voter registration and turnout data are Spanish-surname counts adjusted using Census Population Department undercount estimates.							
NH White and NH Black registration and turnout counts estimated by NDC.							
Citizen Voting Age Pop., Age, Immigration, and other demographics from the 2011-2015 American Community Survey and Special Tabulation 5-year							

Draw the Future for Cathedral City

Can you divide the city into five areas of roughly 10,240 people each? Or can you draw one district of 10,240 people in and around your own neighborhood?

The numbers in the dashed boxes indicate the number of people in that "Population Unit."

Want more detail? An online tool to draw districts block-by-block will be available on the City website.

For more info., please visit
www.cathedralcity.gov

Submit your map at any time at Cathedral City Hall, or send it in by mail, via scan and email, take and email a digital photograph of your map to info@NDCresearch.com.

Your Name & Contact Information
(Optional but recommended):

DEZERTRA

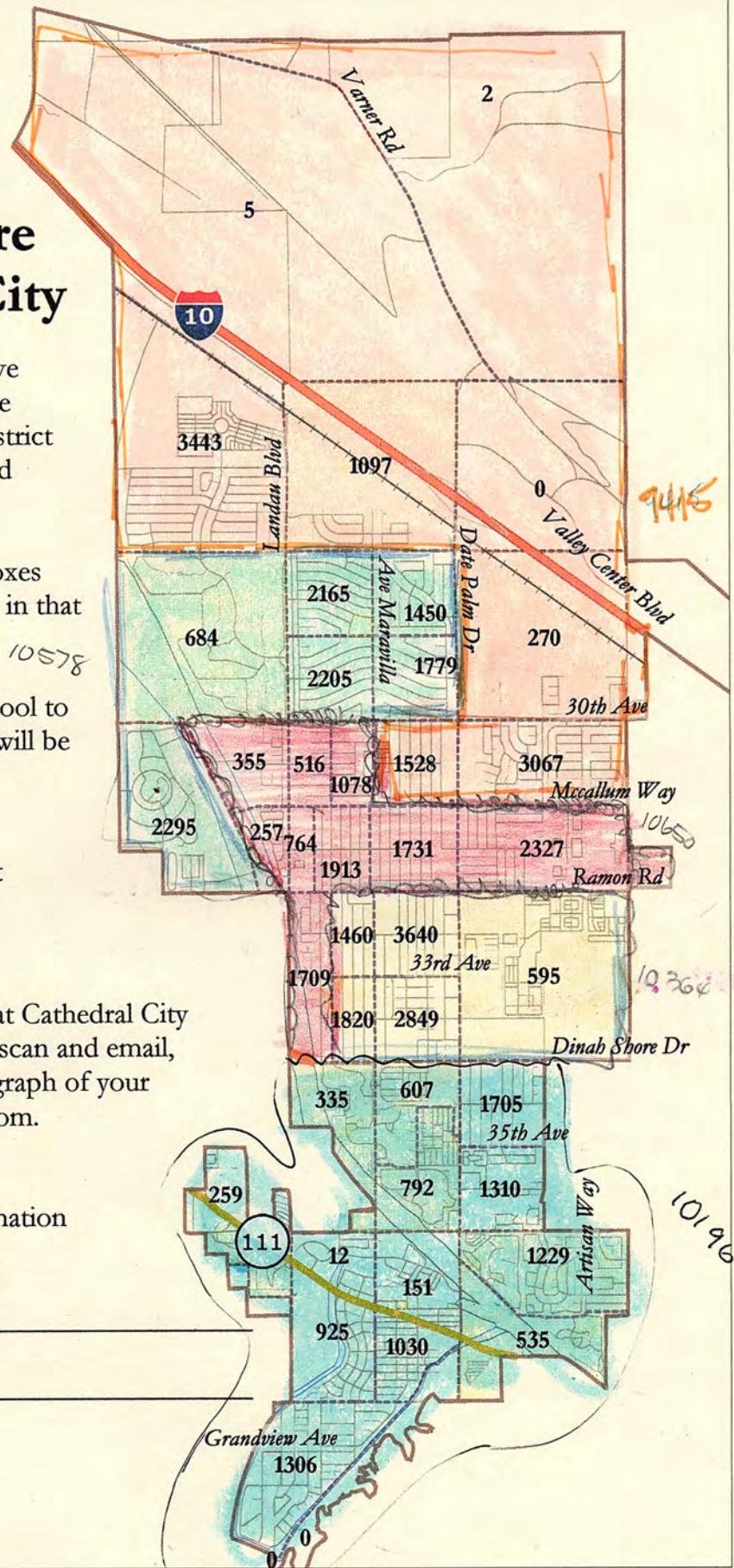
10578

9415

10650

10364

10196



Cathedral City - Dezertrat 1							
District		1	2	3	4	5	Total
<u>Ideal</u>	Total Pop	10,196	10,364	10,650	10,578	9,412	51,200
10,240	Deviation from ideal	-44	124	410	338	-828	1,238
	% Deviation	-0.43%	1.21%	4.00%	3.30%	-8.09%	12.09%
Total Pop	% Hisp	37%	82%	70%	57%	46%	59%
	% NH White	58%	12%	19%	33%	40%	32%
	% NH Black	2%	2%	2%	3%	4%	3%
	% Asian-American	2%	3%	8%	5%	8%	5%
Voting Age Pop	Total	8,575	6,924	7,378	7,638	6,829	37,344
	% Hisp	29%	77%	64%	51%	40%	51%
	% NH White	66%	17%	23%	39%	47%	39%
	% NH Black	2%	2%	2%	3%	3%	2%
	% Asian-American	2%	3%	9%	6%	8%	5%
Citizen Voting Age Pop	Total	6,998	3,698	5,780	6,326	6,463	29,265
	% Hisp	22%	73%	54%	52%	35%	44%
	% NH White	74%	22%	32%	41%	49%	46%
	% NH Black	3%	1%	4%	2%	5%	3%
	% Asian/Pac.Isl.	1%	3%	9%	4%	9%	5%
Voter Registration (Nov 2014)	Total	4,897	2,275	3,850	4,176	3,903	19,101
	% Latino est.	19%	66%	55%	46%	39%	42%
	% Asian-Surnamed	1%	1%	1%	1%	1%	1%
	% Filipino-Surnamed	1%	2%	3%	2%	2%	2%
	% Spanish-Surnamed	17%	59%	50%	42%	35%	38%
	% NH White est.	78%	30%	35%	48%	53%	52%
	% NH Black	1%	2%	4%	2%	5%	3%
Voter Turnout (Nov 2014)	Total	2,830	724	1,429	1,716	1,649	8,348
	% Latino	11%	52%	46%	35%	28%	29%
	% Asian-Surnamed	1%	1%	1%	1%	1%	1%
	% Filipino-Surnamed	1%	1%	2%	1%	2%	1%
	% Spanish-Surnamed	10%	47%	41%	32%	25%	26%
	% NH White est.	86%	44%	43%	59%	64%	65%
Voter Turnout (Nov 2012)	% NH Black	1%	1%	5%	3%	6%	3%
	Total	3,421	1,367	2,289	2,663	2,590	12,331
	% Latino	16%	45%	47%	39%	31%	33%
	% Asian-Surnamed	1%	1%	1%	1%	1%	1%
	% Filipino-Surnamed	1%	1%	2%	1%	1%	1%
	% Spanish-Surnamed	14%	40%	42%	35%	28%	30%
ACS Pop. Est.	% NH White est.	81%	49%	44%	55%	62%	61%
	% NH Black est.	1%	5%	5%	3%	5%	3%
	Total	10,182	10,743	11,195	11,215	9,803	53,138
Age	age0-19	18%	37%	33%	29%	28%	29%
	age20-60	43%	52%	54%	55%	53%	51%
	age60plus	39%	11%	13%	16%	20%	20%
Immigration	immigrants	21%	46%	40%	33%	23%	33%
	naturalized	33%	28%	44%	47%	60%	41%
Language spoken at home	english	68%	17%	32%	46%	65%	45%
	spanish	27%	80%	60%	49%	28%	49%
	asian-lang	1%	2%	6%	2%	5%	3%
	other lang	4%	1%	2%	3%	2%	2%
Language Fluency	Speaks Eng. "Less than Very Well"	15%	38%	28%	22%	12%	23%
Education (among those age 25+)	hs-grad	58%	48%	55%	63%	63%	58%
	bachelor	13%	7%	9%	9%	16%	11%
	graduatedegree	12%	3%	5%	5%	9%	7%
Child in Household	child-under18	13%	47%	44%	37%	37%	34%
Work (percent of pop age 16+)	employed	43%	57%	57%	58%	58%	54%
	Commute on Public Transit	1%	6%	4%	2%	0%	3%
Household Income	income 0-25k	32%	39%	29%	23%	20%	29%
	income 25-50k	29%	32%	32%	27%	25%	29%
	income 50-75k	14%	14%	17%	19%	18%	17%
	income 75-200k	20%	13%	21%	28%	34%	23%
	income 200k-plus	4%	2%	1%	3%	3%	3%
Housing Stats	single family	33%	13%	8%	18%	12%	19%
	multi-family	67%	87%	92%	82%	88%	81%
	vacant	33%	13%	8%	18%	12%	19%
	occupied	67%	87%	92%	82%	88%	81%
	rented	36%	67%	38%	31%	32%	40%
	owned	64%	33%	62%	69%	68%	60%
Total and Voting Age population data from the 2010 Decennial Census.							
Surname-based Voter Registration and Turnout data from the California Statewide Database.							
Latino voter registration and turnout data are Spanish-surname counts adjusted using Census Population Department undercount estimates.							
NH White and NH Black registration and turnout counts estimated by NDC.							
Citizen Voting Age Pop., Age, Immigration, and other demographics from the 2011-2015 American Community Survey and Special Tabulation 5-year							

Cathedral City 2017 Districting

Map: Johnston 1

Johnston

Water Area

Streets

Indian Reservation

Landmark Point

Landmark Area

Pipeline/Power Line

Railroad

River

citylimits

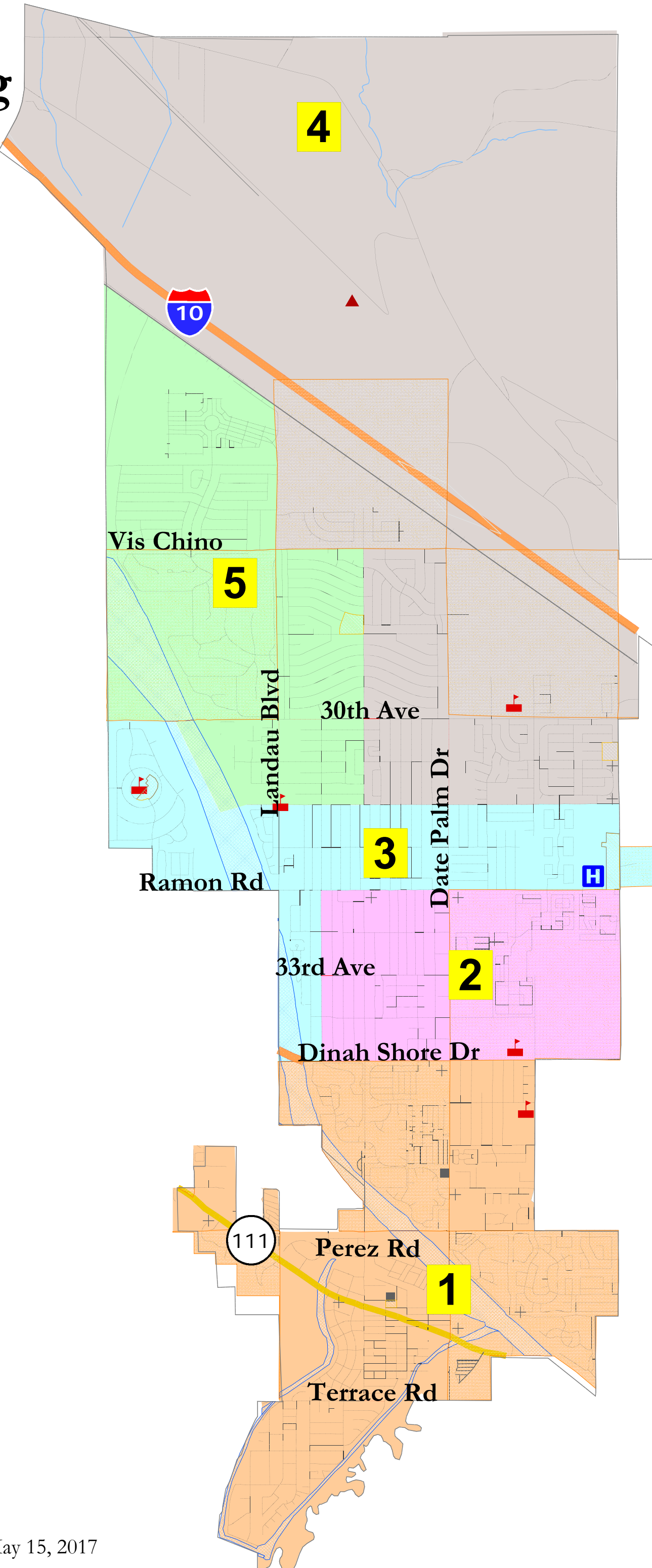
0

.5

1

1.5

Miles



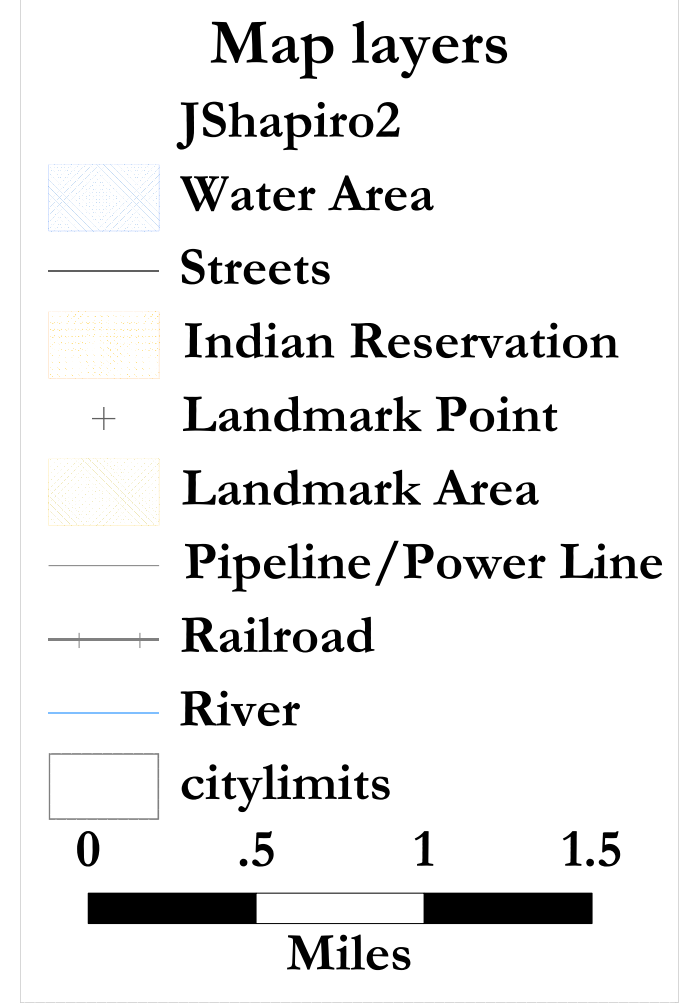
Elections Option A:
2018: Districts 1, 3 and 5
2020: Districts 2 and 4

Elections Option B:
2018: Districts 1, 2 and 3
2020: Districts 4 and 5

Cathedral City - Johnston1							
District		1	2	3	4	5	Total
Ideal	Total Pop	10,196	10,364	10,996	9,198	10,446	51,200
10,240	Deviation from ideal	-44	124	756	-1,042	206	1,798
	% Deviation	-0.43%	1.21%	7.38%	-10.18%	2.01%	17.56%
Total Pop	% Hisp	37%	82%	74%	45%	53%	59%
	% NH White	58%	12%	16%	42%	36%	32%
	% NH Black	2%	2%	2%	3%	4%	3%
	% Asian-American	2%	3%	8%	8%	6%	5%
Voting Age Pop	Total	8,575	6,924	7,649	6,719	7,477	37,344
	% Hisp	29%	77%	69%	39%	46%	51%
	% NH White	66%	17%	19%	48%	43%	39%
	% NH Black	2%	2%	2%	3%	3%	2%
Citizen Voting Age Pop	% Asian-American	2%	3%	9%	8%	6%	5%
	Total	6,998	3,698	5,533	6,283	6,753	29,265
	% Hisp	22%	73%	59%	36%	46%	44%
	% NH White	74%	22%	26%	52%	43%	46%
	% NH Black	3%	1%	4%	3%	4%	3%
	% Asian/Pac.Isl.	1%	3%	9%	7%	6%	5%
	Total	4,897	2,353	3,845	3,950	4,056	19,101
Voter Registration (Nov 2014)	% Latino est.	19%	64%	61%	40%	40%	42%
	% Asian-Surnamed	1%	1%	1%	1%	1%	1%
	% Filipino-Surnamed	1%	2%	3%	2%	1%	2%
	% Spanish-Surnamed	17%	57%	55%	36%	36%	38%
	% NH White est.	78%	29%	31%	53%	53%	52%
	% NH Black	1%	2%	4%	3%	4%	3%
Voter Turnout (Nov 2014)	Total	2,830	773	1,339	1,730	1,676	8,348
	% Latino	11%	50%	52%	30%	30%	29%
	% Asian-Surnamed	1%	1%	1%	1%	1%	1%
	% Filipino-Surnamed	1%	1%	3%	2%	1%	1%
	% Spanish-Surnamed	10%	45%	47%	27%	27%	26%
	% NH White est.	86%	41%	39%	64%	64%	65%
Voter Turnout (Nov 2012)	% NH Black est.	1%	1%	5%	4%	5%	3%
	Total	3,421	1,420	2,152	2,585	2,753	12,331
	% Latino	16%	44%	53%	34%	31%	33%
	% Asian-Surnamed	1%	1%	1%	1%	1%	1%
	% Filipino-Surnamed	1%	1%	2%	2%	1%	1%
	% Spanish-Surnamed	14%	40%	48%	31%	28%	30%
	% NH White est.	81%	47%	39%	60%	62%	61%
	% NH Black est.	1%	5%	5%	3%	5%	3%
ACS Pop. Est.	Total	10,182	10,743	11,434	9,503	11,275	53,138
Age	age0-19	18%	37%	34%	28%	27%	29%
	age20-60	43%	52%	53%	54%	55%	51%
	age60plus	39%	11%	13%	18%	18%	20%
Immigration	immigrants	21%	46%	42%	26%	28%	33%
	naturalized	33%	28%	41%	56%	55%	41%
Language spoken at home	english	68%	17%	30%	57%	56%	45%
	spanish	27%	80%	63%	37%	37%	49%
	asian-lang	1%	2%	5%	4%	4%	3%
	other lang	4%	1%	2%	2%	3%	2%
Language Fluency	Speaks Eng. "Less than Very Well"	15%	38%	31%	15%	15%	23%
Education (among those age 25+)	hs-grad	58%	48%	52%	63%	66%	58%
	bachelor	13%	7%	7%	14%	12%	11%
	graduatedegree	12%	3%	4%	8%	6%	7%
Child in Household	child-under18	13%	47%	43%	39%	35%	34%
Work (percent of pop age 16+)	employed	43%	57%	58%	59%	56%	54%
	Commute on Public Transit	1%	6%	6%	0%	0%	3%
Household Income	income 0-25k	32%	39%	32%	20%	21%	29%
	income 25-50k	29%	32%	35%	24%	24%	29%
	income 50-75k	14%	14%	17%	19%	19%	17%
	income 75-200k	20%	13%	16%	34%	33%	23%
	income 200k-plus	4%	2%	0%	3%	3%	3%
Housing Stats	single family	33%	13%	7%	9%	20%	19%
	multi-family	67%	87%	93%	91%	80%	81%
	vacant	33%	13%	7%	9%	20%	19%
	occupied	67%	87%	93%	91%	80%	81%
	rented	36%	67%	40%	31%	31%	40%
	owned	64%	33%	60%	69%	69%	60%
Total and Voting Age population data from the 2010 Decennial Census.							
Surname-based Voter Registration and Turnout data from the California Statewide Database.							
Latino voter registration and turnout data are Spanish-surname counts adjusted using Census Population Department undercount estimates.							
NH White and NH Black registration and turnout counts estimated by NDC.							
Citizen Voting Age Pop., Age, Immigration, and other demographics from the 2011-2015 American Community Survey and Special Tabulation 5-year							

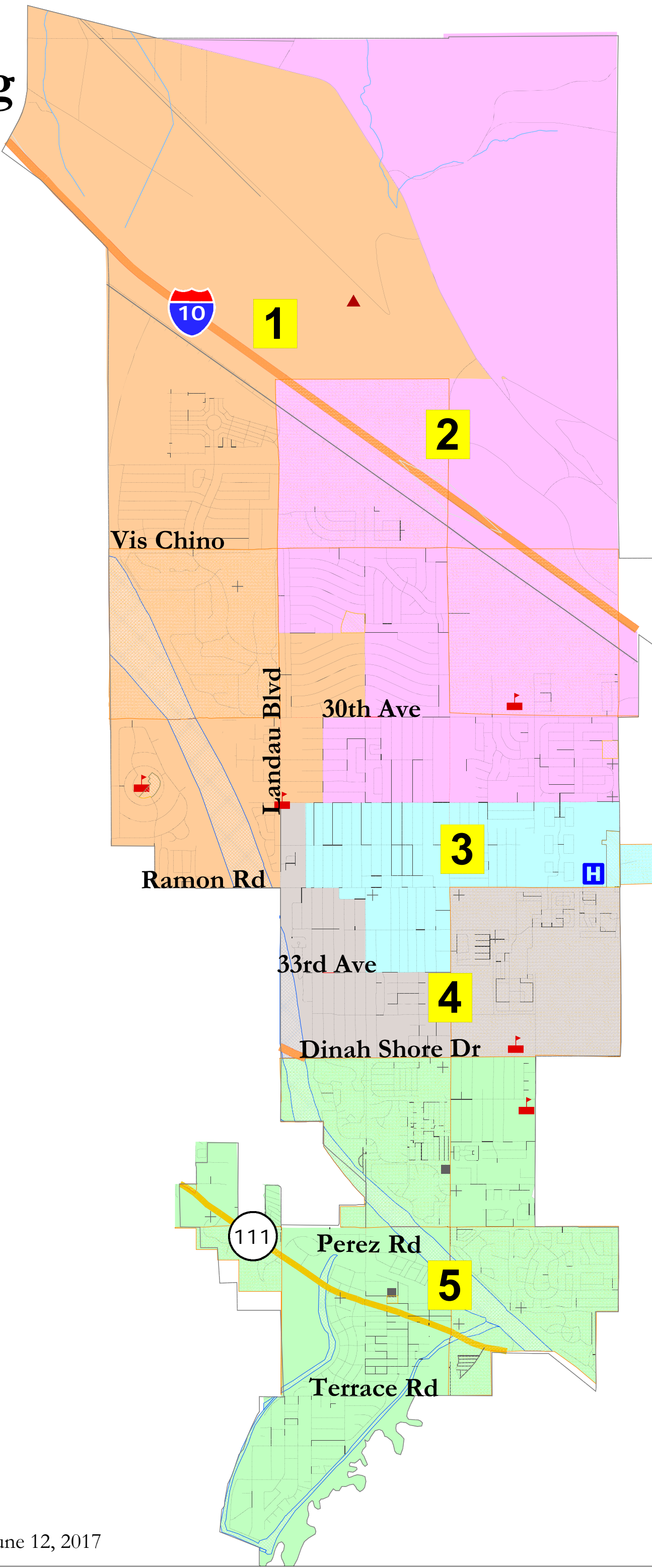
Cathedral City 2017 Districting

Map: JShapiro2



Elections Option A:
2018: Districts 1, 3 and 5
2020: Districts 2 and 4

Elections Option B:
2018: Districts 1, 2, and 3
2020: Districts 4 and 5



Cathedral City - JShapiro2							
District		1	2	3	4	5	Total
Ideal	Total Pop	9,760	12,436	9,622	9,186	10,196	51,200
10,240	Deviation from ideal	-480	2,196	-618	-1,054	-44	3,250
	% Deviation	-4.69%	21.45%	-6.04%	-10.29%	-0.43%	31.74%
Total Pop	% Hisp	55%	50%	78%	77%	37%	59%
	% NH White	34%	37%	12%	17%	58%	32%
	% NH Black	4%	3%	1%	3%	2%	3%
	% Asian-American	5%	8%	8%	3%	2%	5%
Voting Age Pop	Total	7,105	8,910	6,371	6,383	8,575	37,344
	% Hisp	49%	44%	74%	72%	29%	51%
	% NH White	40%	43%	15%	22%	66%	39%
	% NH Black	3%	3%	2%	3%	2%	2%
Citizen Voting Age Pop	% Asian-American	6%	8%	9%	3%	2%	5%
	Total	6,100	7,997	4,052	4,118	6,998	29,265
	% Hisp	50%	40%	62%	65%	22%	44%
	% NH White	39%	50%	22%	29%	74%	46%
Voter Registration (Nov 2014)	% NH Black	4%	3%	3%	3%	3%	3%
	% Asian/Pac.Isl.	6%	7%	12%	3%	1%	5%
	Total	3,874	5,030	2,903	2,397	4,897	19,101
	% Latino est.	45%	42%	61%	60%	19%	42%
Voter Turnout (Nov 2014)	% Asian-Surnamed	1%	1%	1%	1%	1%	1%
	% Filipino-Surnamed	2%	2%	3%	2%	1%	2%
	% Spanish-Surnamed	41%	38%	55%	54%	17%	38%
	% NH White est.	49%	51%	31%	32%	78%	52%
Voter Turnout (Nov 2012)	% NH Black	4%	3%	4%	2%	1%	3%
	Total	1,559	2,135	994	830	2,830	8,348
	% Latino	34%	31%	51%	46%	11%	29%
	% Asian-Surnamed	1%	2%	2%	1%	1%	1%
Voter Turnout (Nov 2012)	% Filipino-Surnamed	1%	1%	3%	1%	1%	1%
	% Spanish-Surnamed	31%	28%	46%	42%	10%	26%
	% NH White est.	60%	62%	39%	44%	86%	65%
	% NH Black	4%	4%	5%	3%	1%	3%
ACS Pop. Est.	Total	2,458	3,299	1,706	1,447	3,421	12,331
	% Latino	37%	34%	47%	47%	16%	33%
	% Asian-Surnamed	1%	1%	1%	1%	1%	1%
	% Filipino-Surnamed	1%	1%	2%	1%	1%	1%
ACS Pop. Est.	% Spanish-Surnamed	34%	31%	42%	42%	14%	30%
	% NH White est.	57%	60%	44%	45%	81%	61%
	% NH Black est.	4%	3%	6%	5%	1%	3%
	Total	10,270	12,863	10,312	9,510	10,182	53,138
Age	age0-19	29%	28%	35%	36%	18%	29%
	age20-60	53%	55%	54%	52%	43%	51%
	age60plus	19%	17%	11%	12%	39%	20%
Immigration	immigrants	31%	27%	44%	44%	21%	33%
	naturalized	47%	56%	34%	35%	33%	41%
Language spoken at home	english	51%	57%	26%	19%	68%	45%
	spanish	43%	37%	67%	77%	27%	49%
	asian-lang	4%	3%	6%	2%	1%	3%
Language Fluency	other lang	3%	2%	1%	1%	4%	2%
	Speaks Eng. "Less than Very Well"	19%	16%	32%	35%	15%	23%
Education (among those age 25+)	hs-grad	62%	64%	51%	50%	58%	58%
	bachelor	11%	13%	8%	8%	13%	11%
	graduatedegree	6%	7%	4%	5%	12%	7%
Child in Household	child-under18	34%	39%	45%	46%	13%	34%
Work (percent of pop age 16+)	employed	57%	58%	56%	58%	43%	54%
	Commute on Public Transit	2%	0%	4%	8%	1%	3%
Household Income	income 0-25k	25%	20%	33%	36%	32%	29%
	income 25-50k	27%	25%	36%	31%	29%	29%
	income 50-75k	19%	18%	15%	16%	14%	17%
	income 75-200k	27%	34%	16%	16%	20%	23%
Housing Stats	income 200k-plus	2%	3%	0%	2%	4%	3%
	single family	21%	8%	7%	13%	33%	19%
	multi-family	79%	92%	93%	87%	67%	81%
	vacant	21%	8%	7%	13%	33%	19%
	occupied	79%	92%	93%	87%	67%	81%
	rented	32%	31%	51%	59%	36%	40%
Housing Stats	owned	68%	69%	49%	41%	64%	60%
	Total and Voting Age population data from the 2010 Decennial Census.						
Surname-based Voter Registration and Turnout data from the California Statewide Database.							
Latino voter registration and turnout data are Spanish-surname counts adjusted using Census Population Department undercount estimates.							
NH White and NH Black registration and turnout counts estimated by NDC. Citizen Voting Age Pop., Age, Immigration, and other demographics from the 2011-2015							

Cathedral City - JShapiro2								
District		1	2	3	4	5	Total	
Ideal	Total Pop	9,760	12,436	9,622	9,186	10,196	51,200	
10,240	Deviation from ideal	-480	2,196	-618	-1,054	-44	3,250	
	% Deviation	-4.69%	21.45%	-6.04%	-10.29%	-0.43%	31.74%	
Total Pop	% Hisp	55%	50%	78%	77%	37%	59%	
	% NH White	34%	37%	12%	17%	58%	32%	
	% NH Black	4%	3%	1%	3%	2%	3%	
	% Asian-American	5%	8%	8%	3%	2%	5%	
Voting Age Pop	Total	7,105	8,910	6,371	6,383	8,575	37,344	
	% Hisp	49%	44%	74%	72%	29%	51%	
	% NH White	40%	43%	15%	22%	66%	39%	
	% NH Black	3%	3%	2%	3%	2%	2%	
Citizen Voting Age Pop	% Asian-American	6%	8%	9%	3%	2%	5%	
	Total	6,100	7,997	4,052	4,118	6,998	29,265	
	% Hisp	50%	40%	62%	65%	22%	44%	
	% NH White	39%	50%	22%	29%	74%	46%	
	% NH Black	4%	3%	3%	3%	3%	3%	
	% Asian/Pac.Isl.	6%	7%	12%	3%	1%	5%	
	Voter Registration (Nov 2014)	Total	3,874	5,030	2,903	2,397	4,897	19,101
		% Latino est.	45%	42%	61%	60%	19%	42%
% Asian-Surnamed		1%	1%	1%	1%	1%	1%	
% Filipino-Surnamed		2%	2%	3%	2%	1%	2%	
% Spanish-Surnamed		41%	38%	55%	54%	17%	38%	
% NH White est.		49%	51%	31%	32%	78%	52%	
Voter Turnout (Nov 2014)	% NH Black	4%	3%	4%	2%	1%	3%	
	Total	1,559	2,135	994	830	2,830	8,348	
	% Latino	34%	31%	51%	46%	11%	29%	
	% Asian-Surnamed	1%	2%	2%	1%	1%	1%	
	% Filipino-Surnamed	1%	1%	3%	1%	1%	1%	
	% Spanish-Surnamed	31%	28%	46%	42%	10%	26%	
Voter Turnout (Nov 2012)	% NH White est.	60%	62%	39%	44%	86%	65%	
	% NH Black	4%	4%	5%	3%	1%	3%	
	Total	2,458	3,299	1,706	1,447	3,421	12,331	
	% Latino	37%	34%	47%	47%	16%	33%	
	% Asian-Surnamed	1%	1%	1%	1%	1%	1%	
	% Filipino-Surnamed	1%	1%	2%	1%	1%	1%	
ACS Pop. Est.	% Spanish-Surnamed	34%	31%	42%	42%	14%	30%	
	% NH White est.	57%	60%	44%	45%	81%	61%	
	% NH Black est.	4%	3%	6%	5%	1%	3%	
	Total	10,270	12,863	10,312	9,510	10,182	53,138	
	Age	age0-19	29%	28%	35%	36%	18%	29%
		age20-60	53%	55%	54%	52%	43%	51%
age60plus		19%	17%	11%	12%	39%	20%	
Immigration	immigrants	31%	27%	44%	44%	21%	33%	
	naturalized	47%	56%	34%	35%	33%	41%	
Language spoken at home	english	51%	57%	26%	19%	68%	45%	
	spanish	43%	37%	67%	77%	27%	49%	
	asian-lang	4%	3%	6%	2%	1%	3%	
	other lang	3%	2%	1%	1%	4%	2%	
Language Fluency	Speaks Eng. "Less than Very Well"	19%	16%	32%	35%	15%	23%	
Education (among those age 25+)	hs-grad	62%	64%	51%	50%	58%	58%	
	bachelor	11%	13%	8%	8%	13%	11%	
	graduatedegree	6%	7%	4%	5%	12%	7%	
Child in Household	child-under18	34%	39%	45%	46%	13%	34%	
Work (percent of pop age 16+)	employed	57%	58%	56%	58%	43%	54%	
	Commute on Public Transit	2%	0%	4%	8%	1%	3%	
Household Income	income 0-25k	25%	20%	33%	36%	32%	29%	
	income 25-50k	27%	25%	36%	31%	29%	29%	
	income 50-75k	19%	18%	15%	16%	14%	17%	
	income 75-200k	27%	34%	16%	16%	20%	23%	
	income 200k-plus	2%	3%	0%	2%	4%	3%	
Housing Stats	single family	21%	8%	7%	13%	33%	19%	
	multi-family	79%	92%	93%	87%	67%	81%	
	vacant	21%	8%	7%	13%	33%	19%	
	occupied	79%	92%	93%	87%	67%	81%	
	rented	32%	31%	51%	59%	36%	40%	
	owned	68%	69%	49%	41%	64%	60%	
Total and Voting Age population data from the 2010 Decennial Census.								
Surname-based Voter Registration and Turnout data from the California Statewide Database.								
Latino voter registration and turnout data are Spanish-surname counts adjusted using Census Population Department undercount estimates.								
NH White and NH Black registration and turnout counts estimated by NDC. Citizen Voting Age Pop., Age, Immigration, and other demographics from the 2011-2015 American Community Survey and Special Tabulation 5-year data.								

Cathedral City 2017 Districting

Map: KWillis1

Map layers

KWillis1

Water Area

Streets

Indian Reservation

+

Landmark Point

Landmark Area

Pipeline/Power Line

Railroad

River

citylimits

0

.5

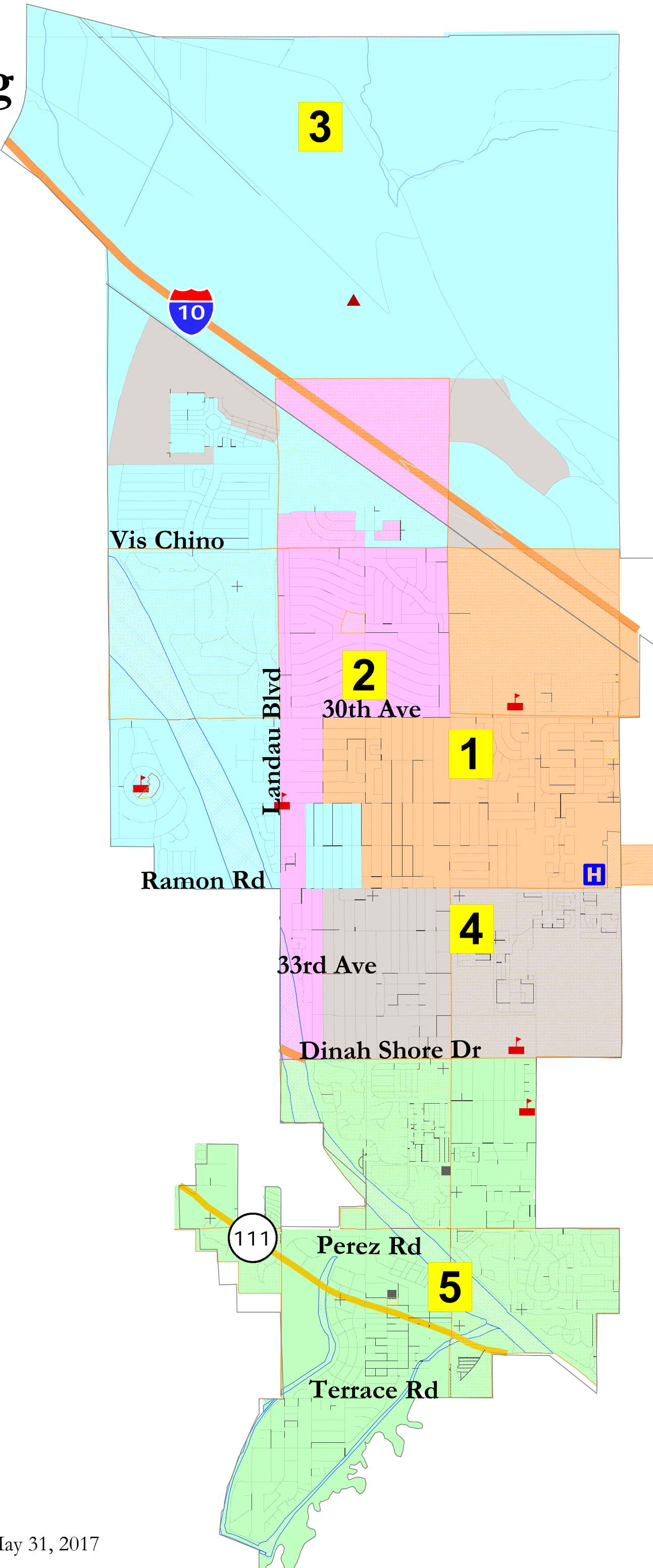
1

1.5

Miles

Elections Option A:
2018: Districts 1, 3 and 5
2020: Districts 2 and 4

Elections Option B:
2018: Districts 2, 3 and 4
2020: Districts 1 and 5



Cathedral City - KWillis1							
District		1	2	3	4	5	Total
Ideal	Total Pop	10,001	11,327	9,258	10,418	10,196	51,200
10,240	Deviation from ideal	-239	1,087	-982	178	-44	2,069
	% Deviation	-2.33%	10.62%	-9.59%	1.74%	-0.43%	20.21%
Total Pop	% Hisp	59%	57%	58%	82%	37%	59%
	% NH White	28%	32%	31%	13%	58%	32%
	% NH Black	2%	4%	3%	2%	2%	3%
	% Asian-American	9%	6%	7%	3%	2%	5%
Voting Age Pop	Total	6,964	8,027	6,810	6,968	8,575	37,344
	% Hisp	53%	51%	53%	77%	29%	51%
	% NH White	34%	38%	36%	17%	66%	39%
	% NH Black	2%	4%	3%	2%	2%	2%
Citizen Voting Age Pop	% Asian-American	10%	6%	7%	3%	2%	5%
	Total	5,883	7,089	5,554	3,741	6,998	29,265
	% Hisp	42%	49%	49%	73%	22%	44%
	% NH White	44%	41%	37%	22%	74%	46%
	% NH Black	3%	4%	4%	1%	3%	3%
	% Asian/Pac.Isl.	9%	5%	9%	4%	1%	5%
	Total	3,934	4,271	3,608	2,391	4,897	19,101
Voter Registration (Nov 2014)	% Latino est.	49%	45%	47%	63%	19%	42%
	% Asian-Surnamed	1%	1%	1%	1%	1%	1%
	% Filipino-Surnamed	3%	2%	2%	2%	1%	2%
	% Spanish-Surnamed	44%	41%	43%	57%	17%	38%
	% NH White est.	45%	47%	45%	30%	78%	52%
	% NH Black	3%	4%	4%	2%	1%	3%
Voter Turnout (Nov 2014)	Total	1,550	1,721	1,457	790	2,830	8,348
	% Latino	37%	35%	36%	49%	11%	29%
	% Asian-Surnamed	1%	1%	1%	1%	1%	1%
	% Filipino-Surnamed	2%	1%	2%	1%	1%	1%
	% Spanish-Surnamed	33%	31%	32%	44%	10%	26%
	% NH White est.	56%	58%	56%	42%	86%	65%
Voter Turnout (Nov 2012)	% NH Black est.	3%	5%	5%	1%	1%	3%
	Total	2,438	2,809	2,216	1,447	3,421	12,331
	% Latino	39%	37%	40%	44%	16%	33%
	% Asian-Surnamed	1%	1%	1%	1%	1%	1%
	% Filipino-Surnamed	2%	1%	1%	1%	1%	1%
	% Spanish-Surnamed	35%	33%	36%	40%	14%	30%
ACS Pop. Est.	% NH White est.	56%	56%	52%	47%	81%	61%
	% NH Black est.	2%	5%	5%	5%	1%	3%
	Total	10,144	12,377	9,631	10,805	10,182	53,138
Age	age0-19	30%	30%	29%	37%	18%	29%
	age20-60	54%	56%	51%	52%	43%	51%
	age60plus	16%	14%	19%	11%	39%	20%
Immigration	immigrants	31%	34%	32%	46%	21%	33%
	naturalized	48%	50%	47%	28%	33%	41%
Language spoken at home	english	49%	43%	51%	17%	68%	45%
	spanish	44%	51%	42%	79%	27%	49%
	asian-lang	5%	3%	5%	2%	1%	3%
	other lang	2%	3%	2%	1%	4%	2%
Language Fluency	Speaks Eng. "Less than Very Well"	21%	22%	20%	38%	15%	23%
Education (among those age 25+)	hs-grad	56%	65%	59%	48%	58%	58%
	bachelor	14%	9%	11%	7%	13%	11%
	graduateddegree	9%	4%	6%	3%	12%	7%
Child in Household	child-under18	39%	44%	32%	46%	13%	34%
Work (percent of pop age 16+)	employed	58%	59%	56%	57%	43%	54%
	Commute on Public Transit	2%	2%	2%	6%	1%	3%
Household Income	income 0-25k	21%	24%	27%	39%	32%	29%
	income 25-50k	30%	26%	29%	32%	29%	29%
	income 50-75k	18%	19%	17%	14%	14%	17%
	income 75-200k	29%	29%	25%	13%	20%	23%
	income 200k-plus	2%	2%	2%	2%	4%	3%
Housing Stats	single family	9%	6%	23%	13%	33%	19%
	multi-family	91%	94%	77%	87%	67%	81%
	vacant	9%	6%	23%	13%	33%	19%
	occupied	91%	94%	77%	87%	67%	81%
	rented	30%	38%	33%	67%	36%	40%
	owned	70%	62%	67%	33%	64%	60%
Total and Voting Age population data from the 2010 Decennial Census.							
Surname-based Voter Registration and Turnout data from the California Statewide Database.							
Latino voter registration and turnout data are Spanish-surname counts adjusted using Census Population Department undercount estimates.							
NH White and NH Black registration and turnout counts estimated by NDC.							
Citizen Voting Age Pop., Age, Immigration, and other demographics from the 2011-2015 American Community Survey and Special Tabulation 5-year							

Cathedral City 2017 Districting

Map: SWillis1

Map layers

SWillis1

Water Area

Streets

Indian Reservation

Landmark Point

Landmark Area

Pipeline/Power Line

Railroad

River

Council

citylimits

0

.5

1

1.5

Miles

The map displays five numbered districts in Cathedral City, California, with various geographical and infrastructure features. District 1 is orange, District 2 is pink, District 3 is yellow, District 4 is grey, and District 5 is green. Key landmarks include Interstate 10 (I-10) running diagonally across the top, Vis Chino to the west, Landau Blvd running vertically through the center, and Ramon Rd running horizontally. Other streets shown are 30th Ave, 33rd Ave, Dinah Shore Dr, Perez Rd, and Henry Rd. Council members are marked with blue dots: Kaplan (2018) in District 5, Aguilar (2020) in District 5, Carnevale (2018) in District 5, and Pettis (2020) in District 5. A red dot marks Henry (2018) in District 5. A blue 'H' icon is located in District 1. The map also shows water areas, Indian reservations, landmark points, pipeline/power lines, railroads, and rivers.

Elections Option A:
2018: Districts 1, 3 and 5
2020: Districts 2 and 4

Elections Option B:
2018: Districts 1, 3 and 4
2020: Districts 2 and 5

National Demographics Corporation, May 31, 2017

Cathedral City - SWillis1							
District		1	2	3	4	5	Total
<u>Ideal</u>	Total Pop	10,001	8,879	11,760	10,364	10,196	51,200
10,240	Deviation from ideal	-239	-1,361	1,520	124	-44	2,881
	% Deviation	-2.33%	-13.29%	14.84%	1.21%	-0.43%	28.13%
Total Pop	% Hisp	59%	55%	59%	82%	37%	59%
	% NH White	28%	34%	30%	12%	58%	32%
	% NH Black	2%	4%	3%	2%	2%	3%
	% Asian-American	9%	6%	6%	3%	2%	5%
Voting Age Pop	Total	6,964	6,327	8,554	6,924	8,575	37,344
	% Hisp	53%	49%	54%	77%	29%	51%
	% NH White	34%	40%	35%	17%	66%	39%
	% NH Black	2%	3%	3%	2%	2%	2%
Citizen Voting Age Pop	% Asian-American	10%	7%	6%	3%	2%	5%
	Total	5,883	5,572	7,114	3,698	6,998	29,265
	% Hisp	42%	50%	48%	73%	22%	44%
	% NH White	44%	43%	37%	22%	74%	46%
	% NH Black	3%	2%	6%	1%	3%	3%
	% Asian/Pac.Isl.	9%	5%	8%	3%	1%	5%
	Total	3,934	3,496	4,421	2,353	4,897	19,101
Voter Registration (Nov 2014)	% Latino est.	49%	45%	48%	64%	19%	42%
	% Asian-Surnamed	1%	1%	1%	1%	1%	1%
	% Filipino-Surnamed	3%	2%	2%	2%	1%	2%
	% Spanish-Surnamed	44%	40%	43%	57%	17%	38%
	% NH White est.	45%	50%	44%	29%	78%	52%
	% NH Black	3%	3%	6%	2%	1%	3%
Voter Turnout (Nov 2014)	Total	1,550	1,423	1,772	773	2,830	8,348
	% Latino	37%	36%	35%	50%	11%	29%
	% Asian-Surnamed	1%	2%	1%	1%	1%	1%
	% Filipino-Surnamed	2%	1%	2%	1%	1%	1%
	% Spanish-Surnamed	33%	32%	32%	45%	10%	26%
	% NH White est.	56%	59%	55%	41%	86%	65%
	% NH Black	3%	3%	7%	1%	1%	3%
Voter Turnout (Nov 2012)	Total	2,438	2,330	2,722	1,420	3,421	12,331
	% Latino	39%	37%	40%	44%	16%	33%
	% Asian-Surnamed	1%	1%	1%	1%	1%	1%
	% Filipino-Surnamed	2%	1%	1%	1%	1%	1%
	% Spanish-Surnamed	35%	33%	36%	40%	14%	30%
	% NH White est.	56%	58%	51%	47%	81%	61%
	% NH Black est.	2%	3%	7%	5%	1%	3%
ACS Pop. Est.	Total	10,144	9,781	12,287	10,743	10,182	53,138
Age	age0-19	30%	29%	30%	37%	18%	29%
	age20-60	54%	57%	52%	52%	43%	51%
	age60plus	16%	14%	18%	11%	39%	20%
Immigration	immigrants	31%	33%	33%	46%	21%	33%
	naturalized	48%	52%	47%	28%	33%	41%
Language spoken at home	english	49%	46%	47%	17%	68%	45%
	spanish	44%	48%	46%	80%	27%	49%
	asian-lang	5%	3%	4%	2%	1%	3%
	other lang	2%	3%	2%	1%	4%	2%
Language Fluency	Speaks Eng. "Less than Very Well"	21%	20%	21%	38%	15%	23%
Education (among those age 25+)	hs-grad	56%	66%	59%	48%	58%	58%
	bachelor	14%	10%	10%	7%	13%	11%
	graduateddegree	9%	4%	6%	3%	12%	7%
Child in Household	child-under18	39%	43%	36%	47%	13%	34%
Work (percent of pop age 16+)	employed	58%	58%	57%	57%	43%	54%
	Commute on Public Transit	2%	1%	3%	6%	1%	3%
Household Income	income 0-25k	21%	22%	28%	39%	32%	29%
	income 25-50k	30%	25%	29%	32%	29%	29%
	income 50-75k	18%	20%	17%	14%	14%	17%
	income 75-200k	29%	31%	24%	13%	20%	23%
	income 200k-plus	2%	3%	2%	2%	4%	3%
Housing Stats	single family	9%	5%	20%	13%	33%	19%
	multi-family	91%	95%	80%	87%	67%	81%
	vacant	9%	5%	20%	13%	33%	19%
	occupied	91%	95%	80%	87%	67%	81%
	rented	30%	33%	38%	67%	36%	40%
	owned	70%	67%	62%	33%	64%	60%
Total and Voting Age population data from the 2010 Decennial Census.							
Surname-based Voter Registration and Turnout data from the California Statewide Database.							
Latino voter registration and turnout data are Spanish-surname counts adjusted using Census Population Department undercount estimates.							
NH White and NH Black registration and turnout counts estimated by NDC.							
Citizen Voting Age Pop., Age, Immigration, and other demographics from the 2011-2015 American Community Survey and Special Tabulation 5-year							

Draw the Future for Cathedral City

Can you divide the city into five areas of roughly 10,240 people each? Or can you draw one district of 10,240 people in and around your own neighborhood?

The numbers in the dashed boxes indicate the number of people in that "Population Unit."

Want more detail? An online tool to draw districts block-by-block will be available on the City website.

For more info., please visit
www.cathedralcity.gov

Submit your map at any time at Cathedral City Hall, or send it in by mail, via scan and email, take and email a digital photograph of your map to info@NDCresearch.com.

Your Name & Contact Information
(Optional but recommended):

LINDA Sabol

760 219 6998 (30199 Sterling Rd.)

9432

12279

~~11478~~ 9038

11478 Sq. mile

8973

lindasabol@live.com

