

KEY NOTES

1.

(N) ACCESSIBLE PARKING STALLS
2.

(E) PARKING, PROVIDE (N) SLURRY & RE-STRIPING
3.

(N) PARKING, STRIPE PER CITY'S STANDARD AS REQ'D.
4.

(N) CONC. WALKWAY W/ CURB, PEDESTRIAN ACCESS PATH OF TRAVEL
5.

DETECTABLE WARNING TRUNCATED DOMES
6.

GREASE INTERCEPTOR (UNDERGROUND)
7.

(N) CURB CUT W/ DETECTABLE WARNING AND TRUNCATED DOMES FOR ACCESSIBILITY PER CITY STANDARD
8.

INGRESS AND EGRESS TRAFFIC DIRECTION ARROW PER CITY STANDARD
9.

BICYCLE PARKING WITH LOCK RACK
10.

PATIO WITH STAMPED COLOR CONCRETE FLOOR AND 42"H. W.I. RAILING ENCLOSURE
11.

CONC. SIDEWALK W/ CURB. ACCESSIBLE PATH OF TRAVEL SHALL HAVE MAXIMUM SLOPE OF 5% AND CROSS-SLOPE OF 2% MAX.
12.

NO PARKING AREA STRIPING
13.

(E) LAMP POST
14.

(E) WATER CHECK VALVE
15.

(E) WATER VALVE
16.

(E) FIRE HYDRANT
17.

(E) POWER POLE
18.

(E) WATER MAIN
19.

(E) SEWAGE LINE. REFER TP CIVIL PLANS
20.

(E) GAS LINE. REFER TP CIVIL PLANS
21.

(E) ADDRESS NUMBER SIGNAGE ON (E) CMU WALL. SIGNAGE TO BE ILLUMINATED
22.

(E) RELOCATED WALL SIGN ON (E) CMU WALL
23.

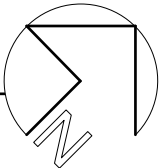
RAISED PLANTER
24.

CMU WALL ENCLOSURE W/ STUCCO FINISH TO MATCH BUILDING
25.

PLANTER W/ CONC. CURB
26.

(N) MTL. FENCE

1 SITE PLAN - ENLARGED
SCALE: 3/32" = 1'-0"



NO.	DATE	DESCRIPTION
-----	------	-------------

This document contains information proprietary to nnARCHITECTS Inc. and is furnished in confidence for the limited purpose of evaluation, bidding or review. This document or its contents may not be used for any other purpose and may not be reproduced or disclosed to others without the prior written consent of nnARCHITECTS Inc.

Date Modified:	12/15/2016
Scale:	AS SHOWN
Project No.:	095-16
Drawn By:	nn

SITE PLAN
ENLARGED

A1.3

nnARCHITECTS

architecture | planning | design

3621 W. MacArthur Blvd. Ste.117

Santa Ana, CA 92704

714.554.0106 T.

www.nn-arch.com

LICENSED ARCHITECT

SCOTT E. NEVILLE

C-31228

6 / 30 / 17

RENEWAL

STATE OF CALIFORNIA