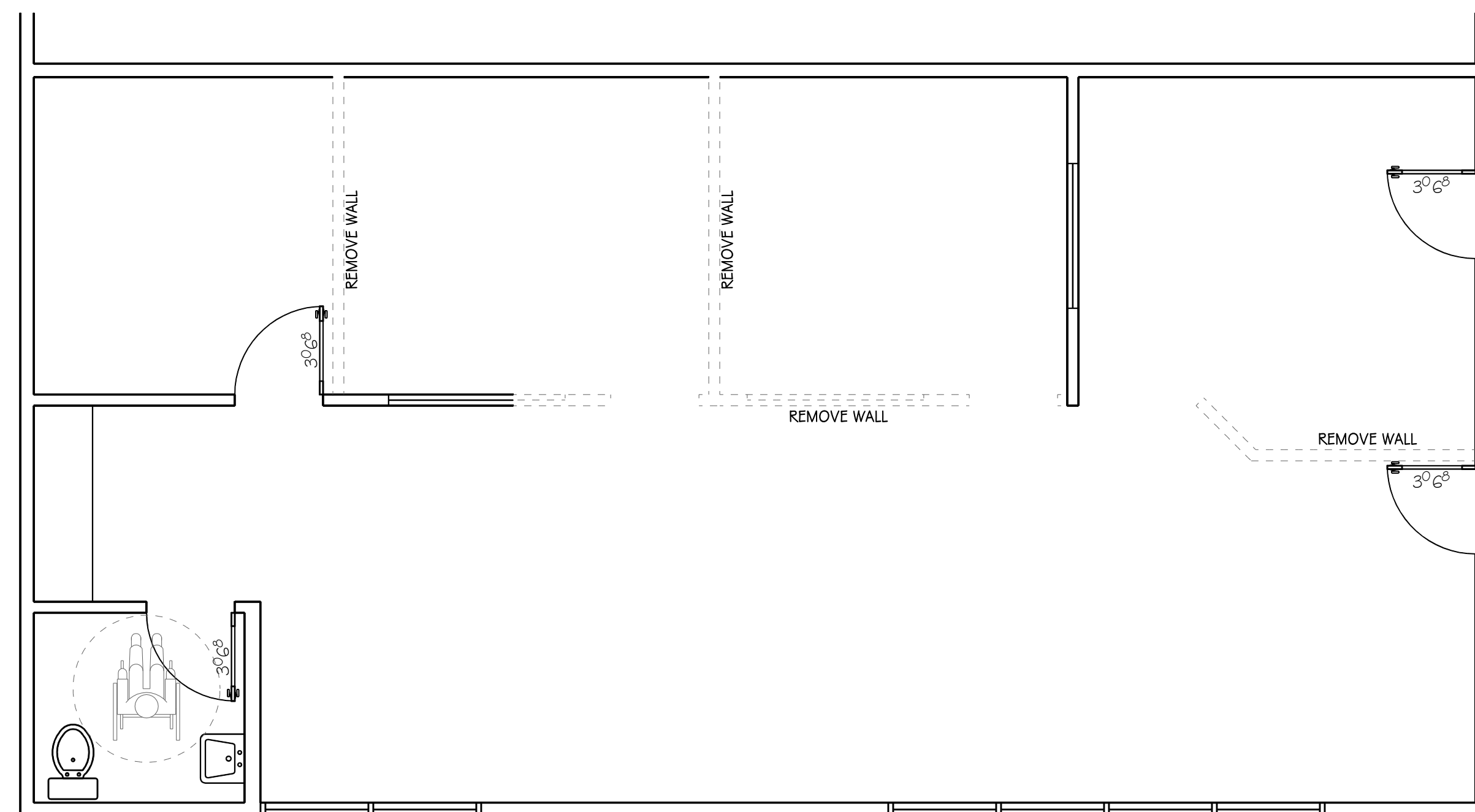
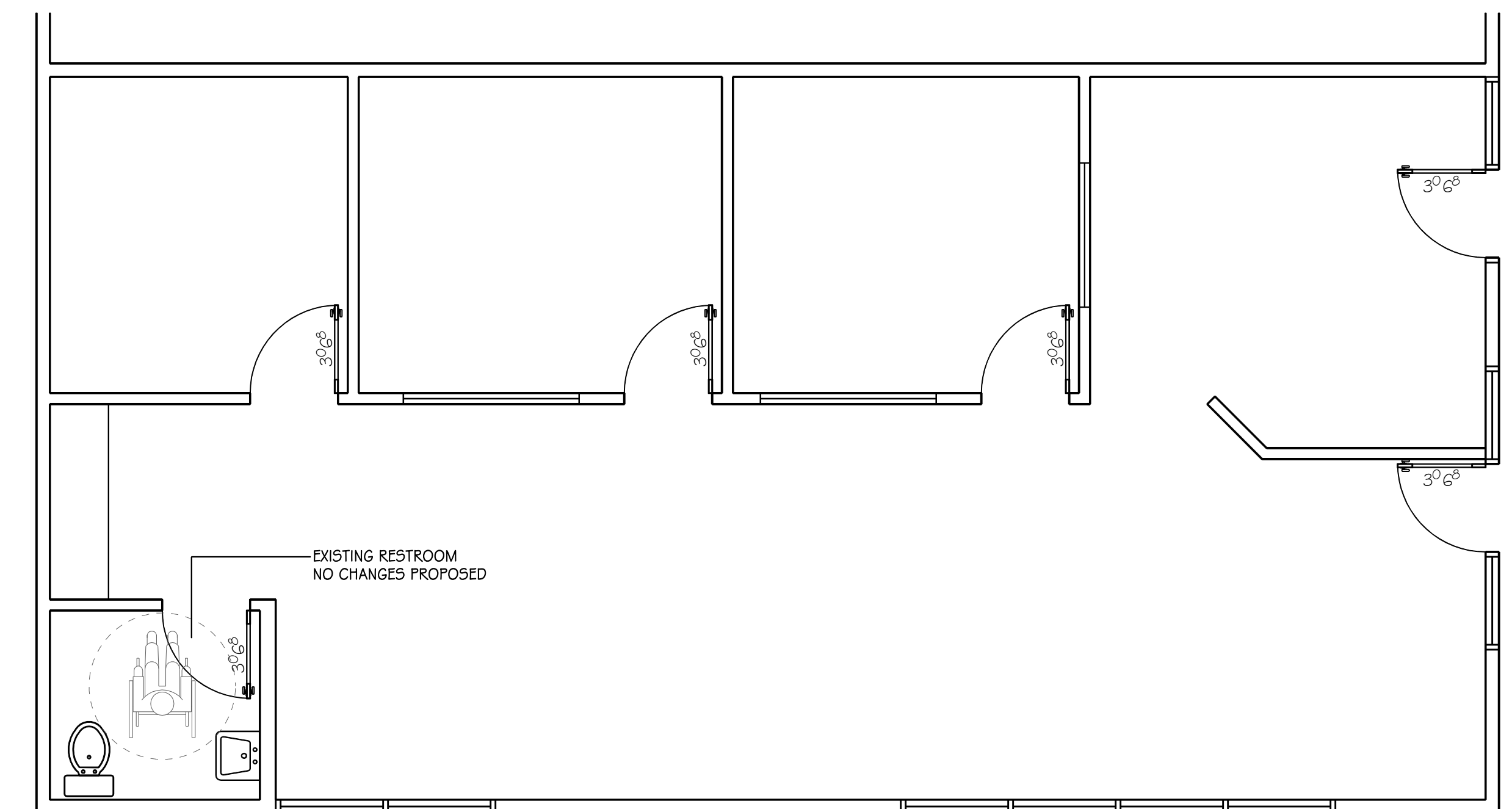


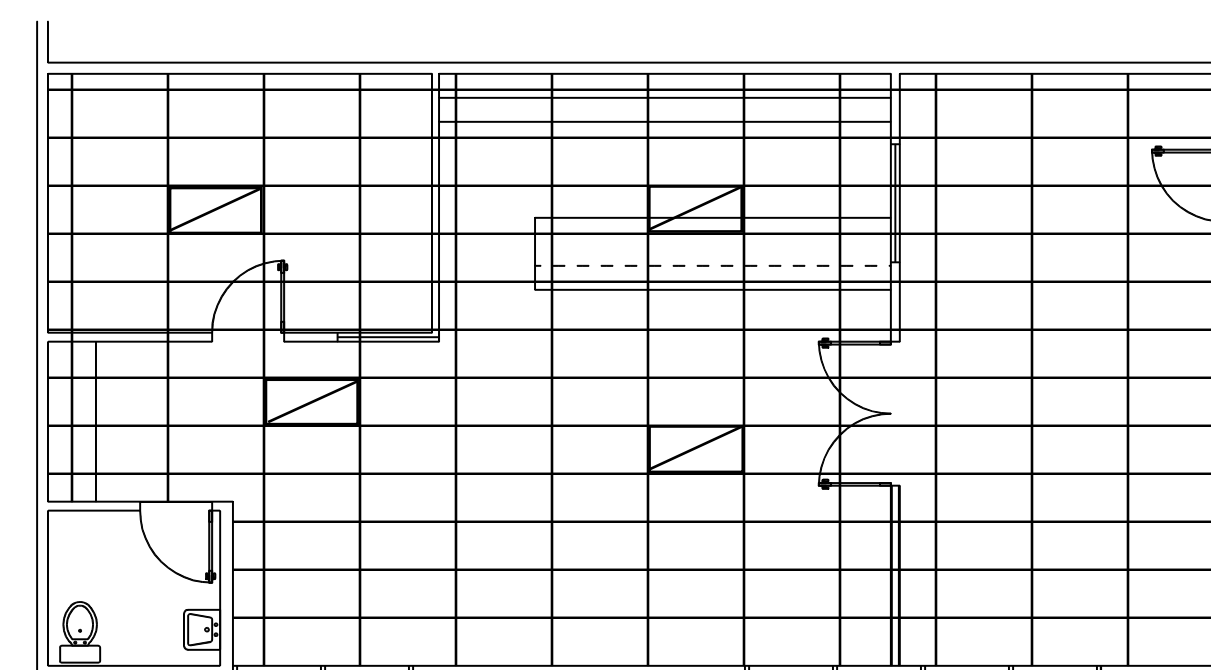
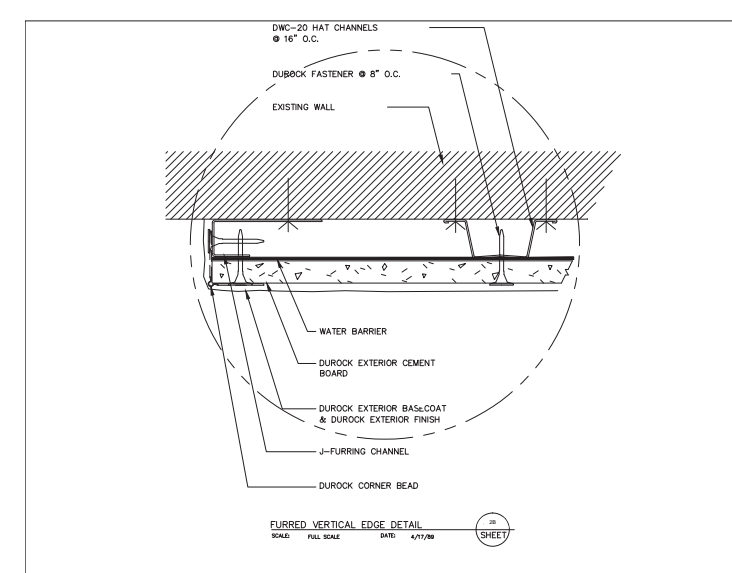
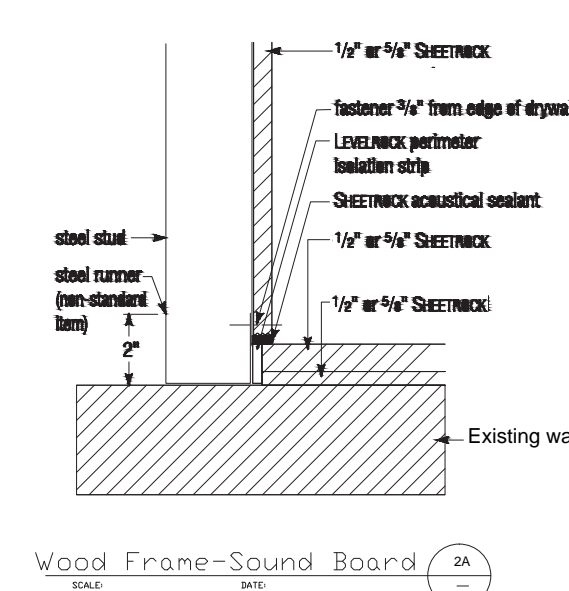
Revisions By[illegible]

## DEMO PLAN

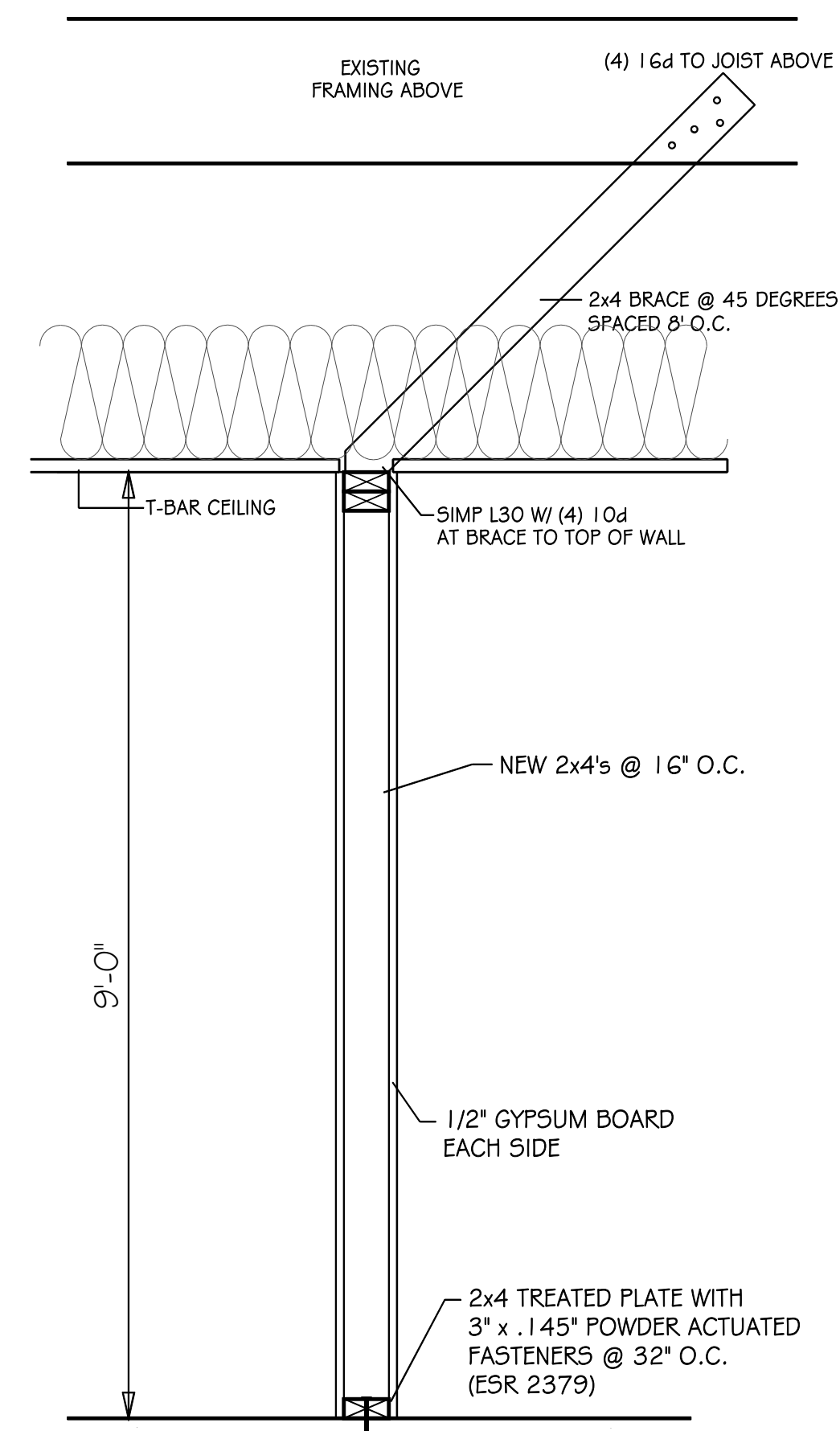
----- REMOVE DASHED WALLS



### EXISTING FLOOR PLAN

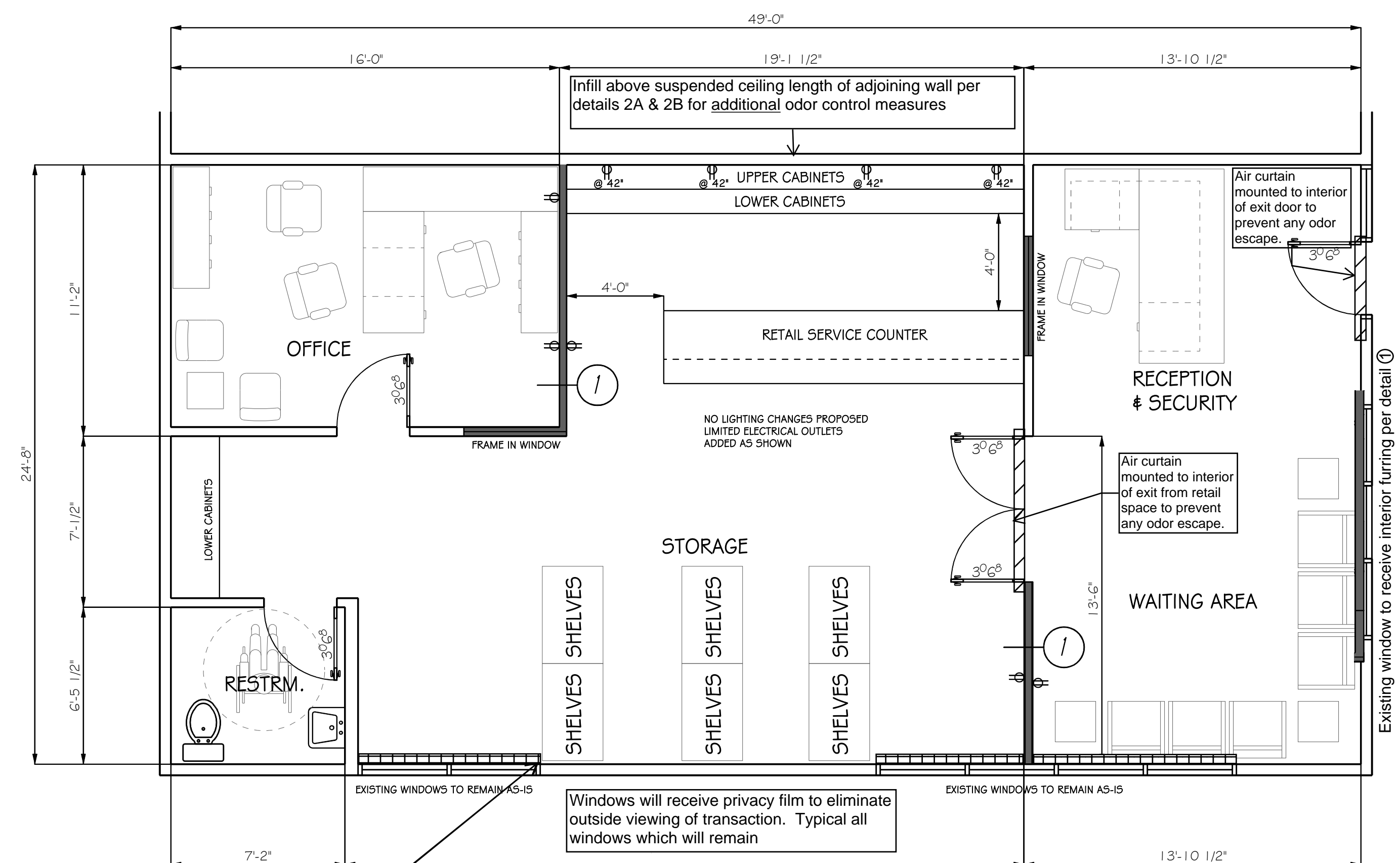


T-BAR REWORK LIMITED  
TO REPAIRING WHERE WALLS  
ARE BEING REMOVED  
NO NEW T-BAR PROPOSED




### Wall Framing Detail

Scale: 1" = 1'-0"



In addition to window sensors installed by SoCal Alarms, Lockable security fixtures will be added at all existing windows to remain. Fixtures will remain locked during all non operation hours to prevent unauthorized entry to facility.

-  NEW WALLS (2x4's @ 16" O.C.)  
 EXISTING WALLS  
 Lockable Security Fixture

== EXISTING WALLS

 Lockable Security Fixture

## FLOOR PLAN

# DESIGN CONCEPTS

## DRAFTING AND DESIGN SERVICE

**DRAFTING AND DESIGN SERVICE**  
57445 29 Palms Hwy., Suite 304  
Yucca Valley, CA 92284  
Phone (760) 365-8742  
Fax (760) 365-8743

Yucca Valley, CA 92284  
Phone (760) 365-8742

Yucca Valley, CA 92284  
Phone (760) 365-8742

Fax (760) 365-8743

Fax (760) 365-8743

RAWN

MIAN T. DIEBOLT

CHECKED

DATE \_\_\_\_\_

06/09/16

SALE

$$|/4^{11} \approx |^1$$

NUMBER

Tom Lopez

MEET N

●

SHEETS