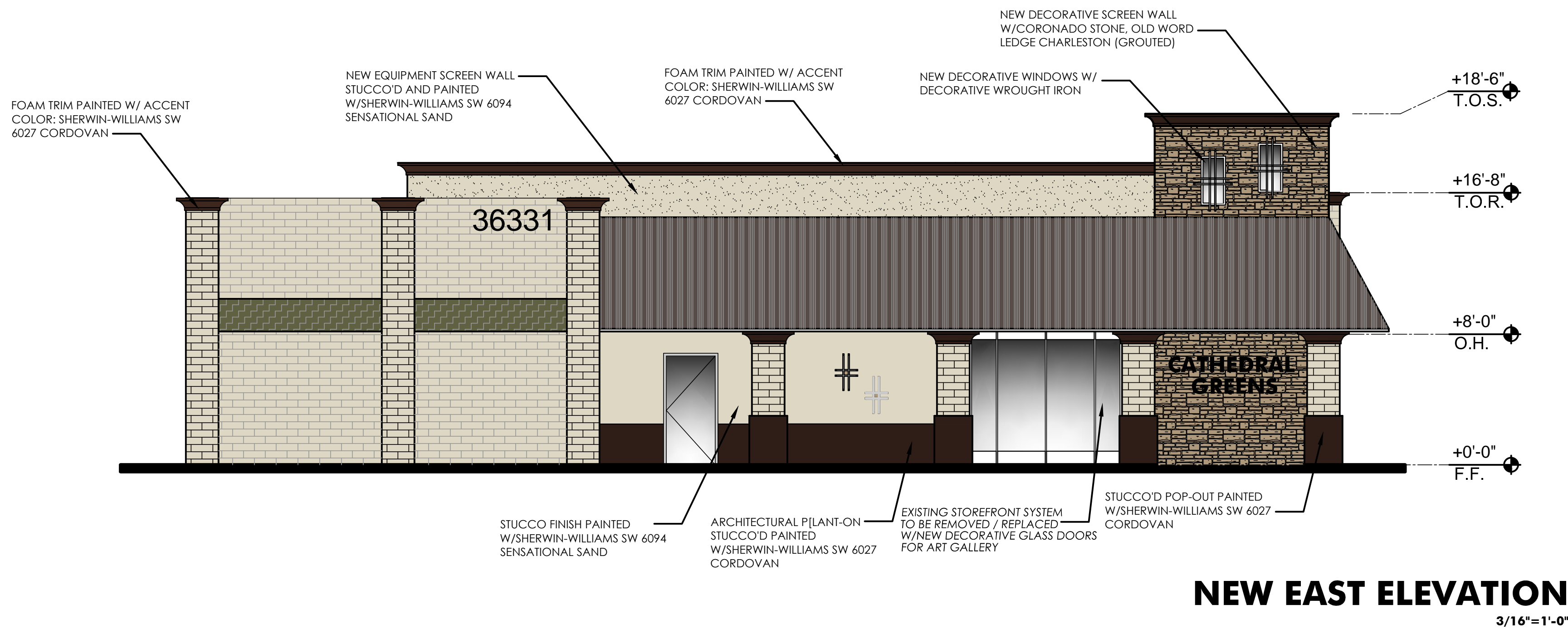
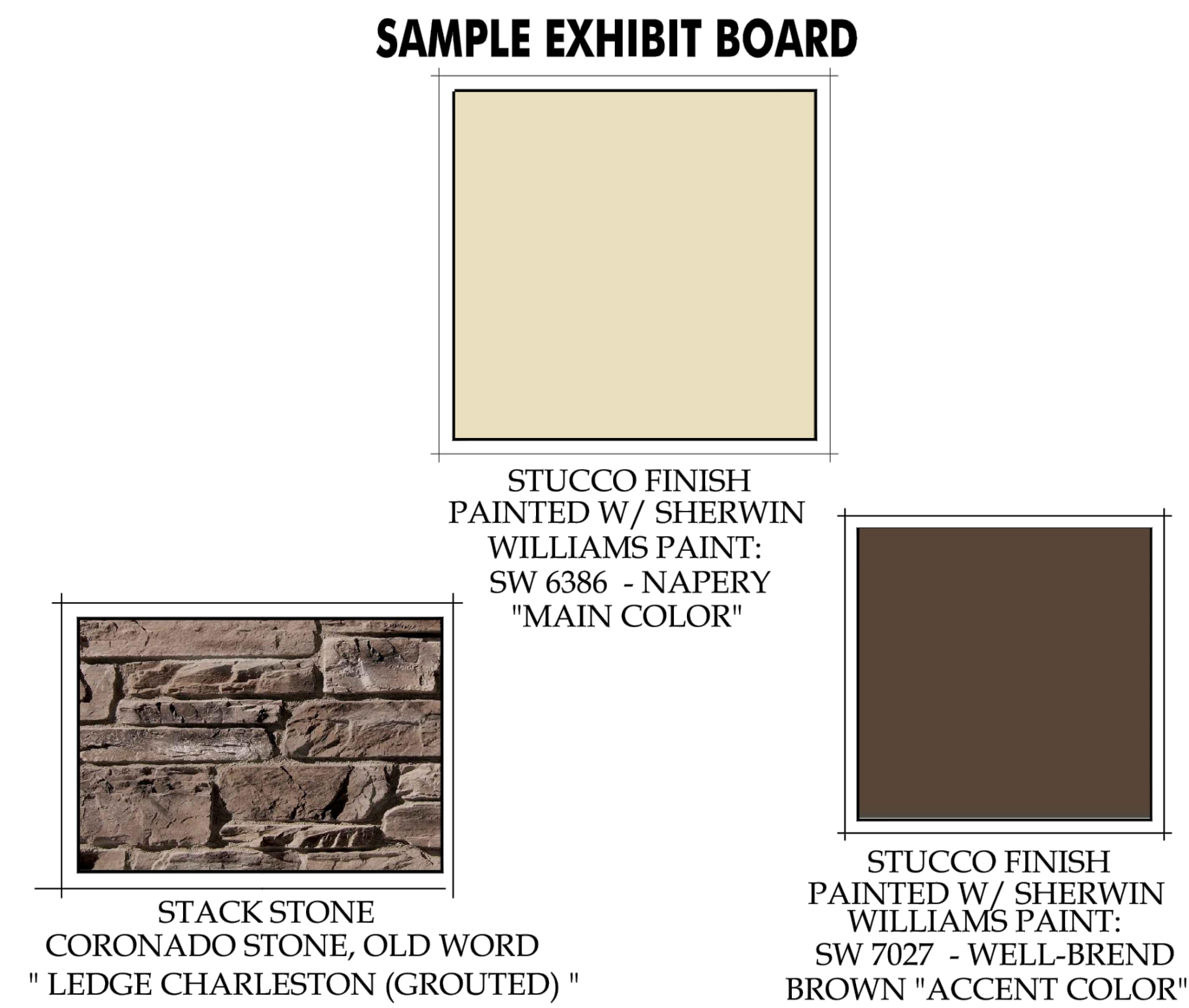
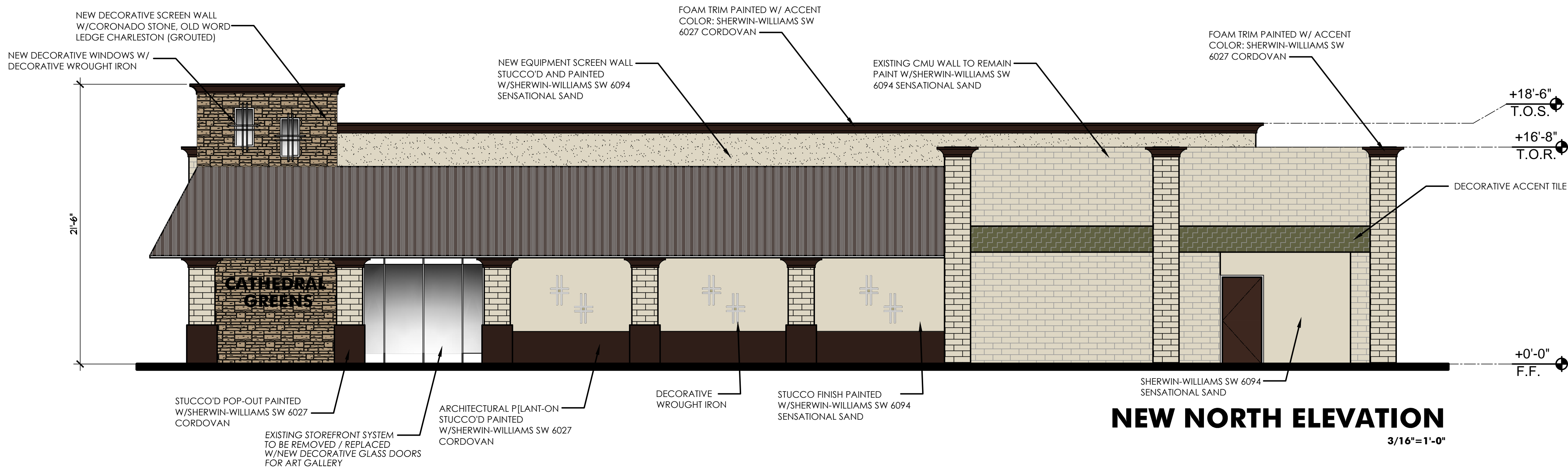


THESE DRAWINGS ARE PREPARED BY GABRIEL LUJAN & ASSOCIATES, INC. FOR THE ARCHITECT'S USE. THE ARCHITECT'S RESPONSIBILITY IS TO REVIEW AND APPROVE THE DRAWINGS FOR CONFORMANCE WITH THE CITY OF PALM DESERT'S REQUIREMENTS. GABRIEL LUJAN & ASSOCIATES, INC. SHALL NOT BE RESPONSIBLE FOR ANY ERRORS OR OMISSIONS IN THE DRAWINGS. THE ARCHITECT'S RESPONSIBILITY IS TO REVIEW AND APPROVE THE DRAWINGS FOR CONFORMANCE WITH THE CITY OF PALM DESERT'S REQUIREMENTS. GABRIEL LUJAN & ASSOCIATES, INC. SHALL NOT BE RESPONSIBLE FOR ANY ERRORS OR OMISSIONS IN THE DRAWINGS.



GABRIEL LUJAN & ASSOCIATES

GABRIEL LUJAN & ASSOCIATES

DESIGN • LAND PLANNING

GABRIEL LUJAN

PRINCIPAL DESIGNER

77-530 ENFIELD LN. BLDG. 1-STE. 101
PALM DESERT, CA 92311

CELL: 760.374.4400
EMAIL: glujan@glausa.com

A CONDITIONAL USE PERMIT FOR:
CATHEDRAL GREENS
36-331 CATHEDRAL CANYON DR., CATHEDRAL CITY, CA.

REVISIONS BY

NO.	DESCRIPTION	DATE

SHEET TITLE:

COLOR'S EXTERIOR ELEVATIONS

DRAWN: GLA
CHECKED: GLA
DATE: NOVEMBER 2017
SCALE: AS NOTED
JOB NO: CG-0305-2K17

SHEET

P6

Printed On: 04/02/18